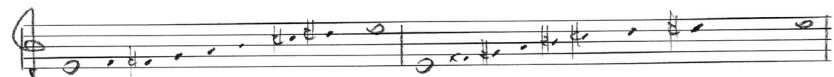
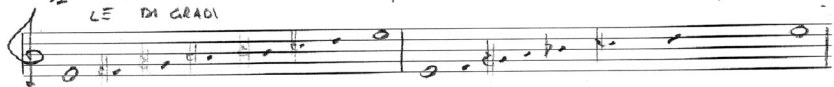
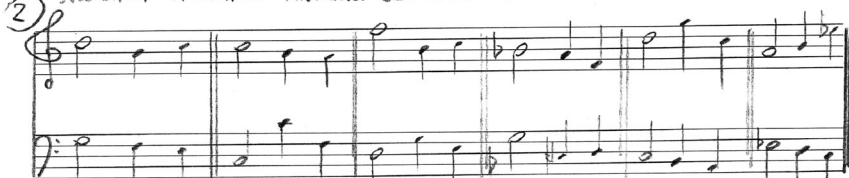


1 SCALE COMPOSTE DI SEMITONI, TONI E TONIE MEZZO E CON NUMERO VARIABILI LE DI GRADI



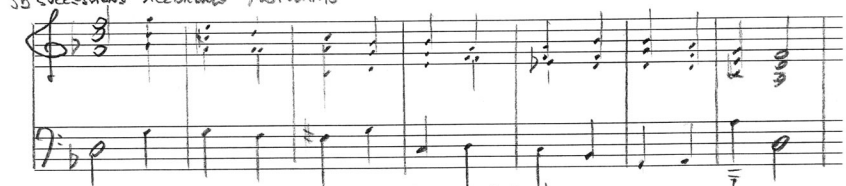
2) SUCCESSIONI DI INTERVALLI ARITMONICI CON INIZIO DATA



3a) SUCCESSIONE ACCORDATI ARITMONICA A 4 PARTI CON INIZIO DATA (SPECIFICA LE ESPONENZE INTERNE)



3b) SUCCESSIONI ACCORDATI MOPVANTIS



4) TRASCRIVI LA PARTE DELLO STRUMENTO SOLISTA (obbl.) E INIZIA LO STRUMENTO



MODERN. HORN KONZERT K 497 (ZADEK BAZDOLAK) IS. NOV.

MOZART SONATA K 292 X K. 279 (3 mov.)

5 TRASCRIPIE LE OUE PARTI SCHEMATICI E INFINCA AN SCHEMATICI

5: do

5: 1/6

Handwritten musical score for the first movement of Mozart's Sonata K. 292. The score is written in a simplified, schematic style. It consists of two systems of staves. The first system has a treble clef staff with notes and rests, and a bass clef staff with notes. The second system also has a treble clef staff with notes and rests, and a bass clef staff with notes. There are various musical notations including slurs, accents, and dynamic markings like 'f' and 'p'. The score is written in a simplified, schematic style.

Five sets of empty musical staves, each consisting of a treble clef staff and a bass clef staff, arranged vertically.