

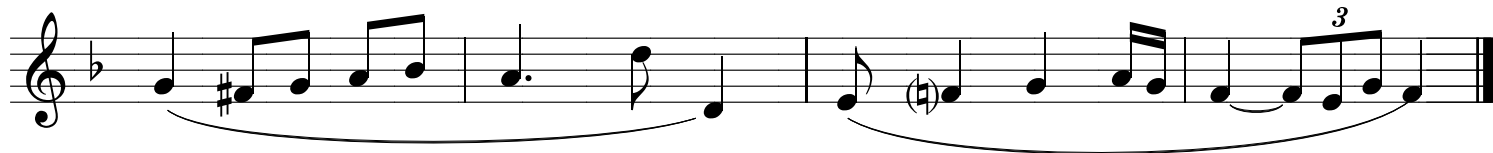
# 70 Dettati a una voce

- difficili -


G. Guerra

(2012)

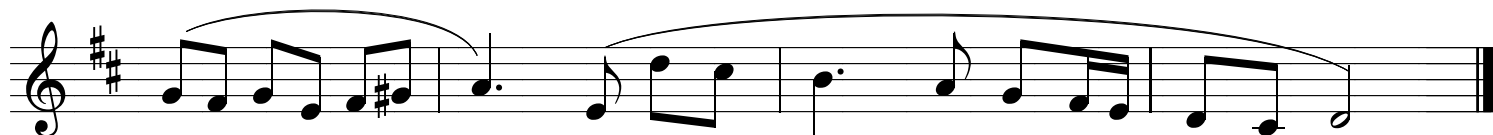
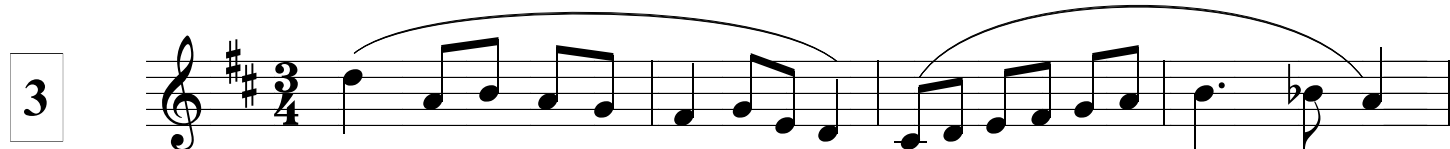
1



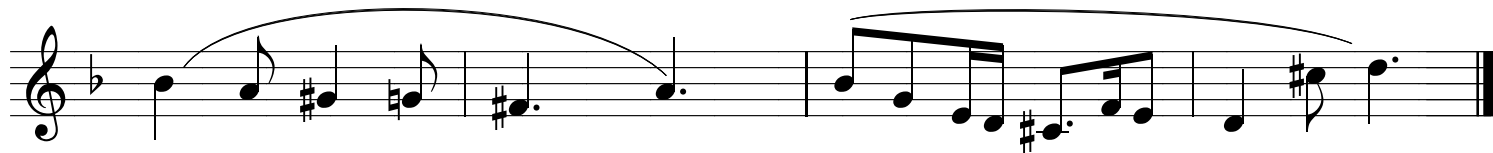
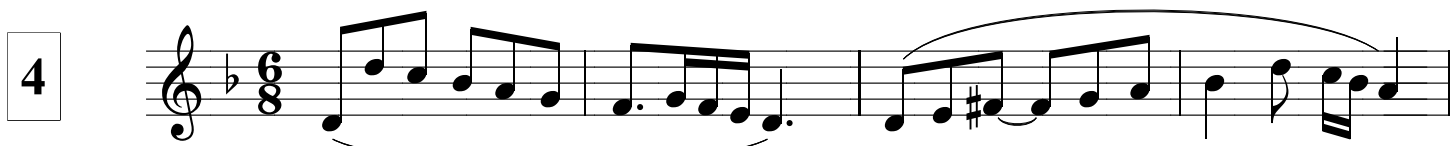
2



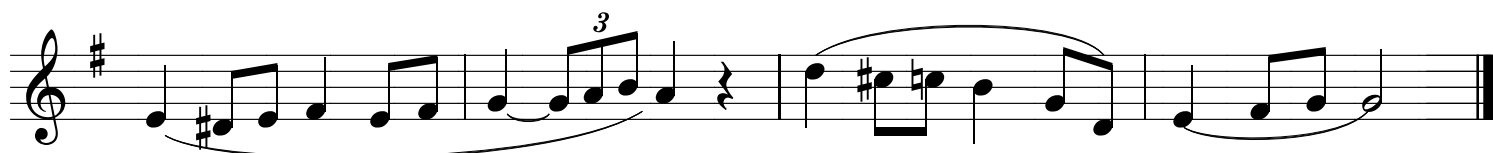

3



4



5



6

Exercise 6, measures 1-2. The first staff is in 4/4 time with a treble clef. It features a melodic line with a slur over the first two measures and a fermata at the end of the second measure. The second staff continues the melody with a slur over the first two measures and a fermata at the end of the second measure.

7

Exercise 7, measures 1-2. The first staff is in 6/8 time with a treble clef and a key signature of one flat. It features a melodic line with a slur over the first two measures and a fermata at the end of the second measure. The second staff continues the melody with a slur over the first two measures and a fermata at the end of the second measure.

8

Exercise 8, measures 1-2. The first staff is in 3/4 time with a treble clef and a key signature of one flat. It features a melodic line with a slur over the first two measures and a fermata at the end of the second measure. The second staff continues the melody with a slur over the first two measures and a fermata at the end of the second measure.

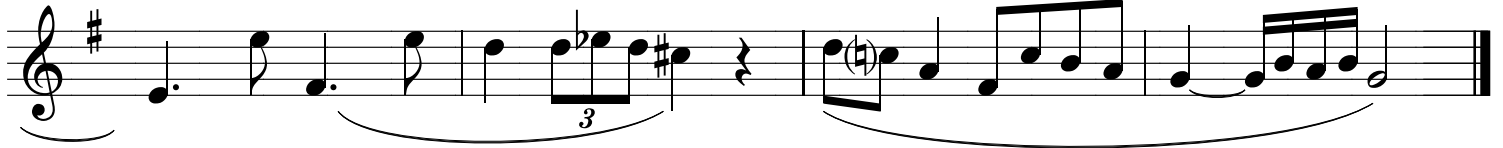
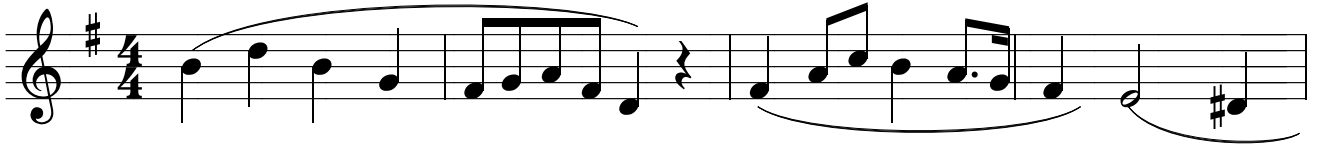
9

Exercise 9, measures 1-2. The first staff is in 3/4 time with a treble clef and a key signature of two sharps. It features a melodic line with a slur over the first two measures and a fermata at the end of the second measure. The second staff continues the melody with a slur over the first two measures and a fermata at the end of the second measure.

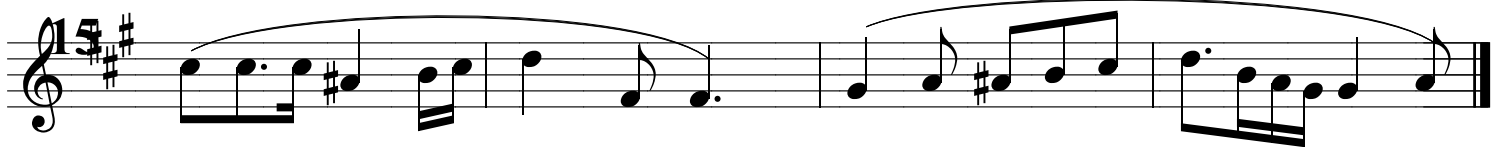
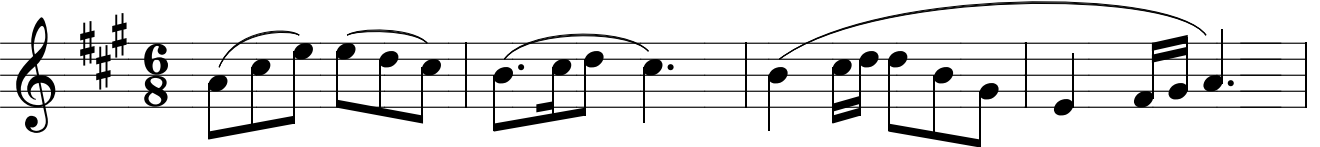
10

Exercise 10, measures 1-2. The first staff is in 3/4 time with a treble clef and a key signature of one flat. It features a melodic line with a slur over the first two measures and a fermata at the end of the second measure. The second staff continues the melody with a slur over the first two measures and a fermata at the end of the second measure.

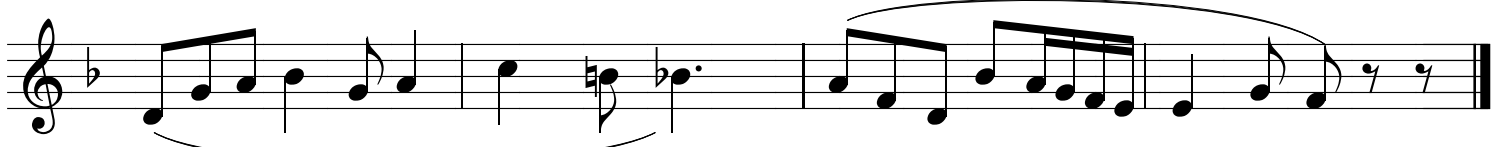
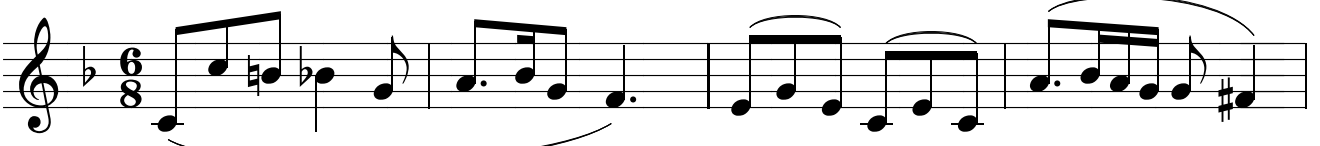
11



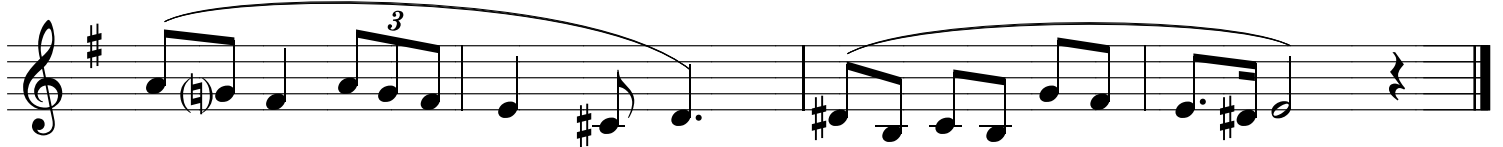
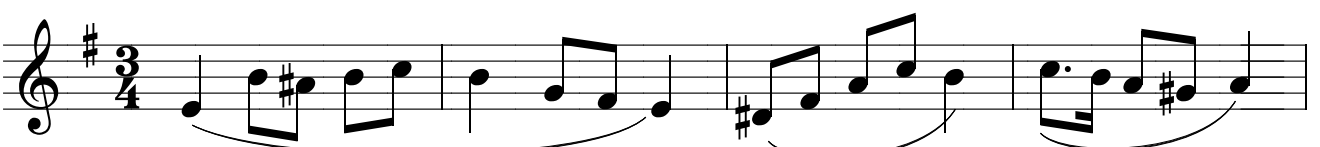
12



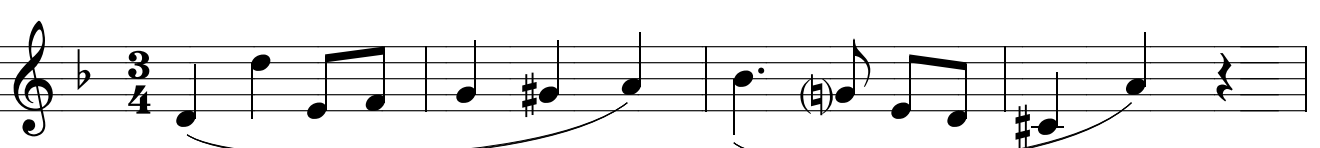
13



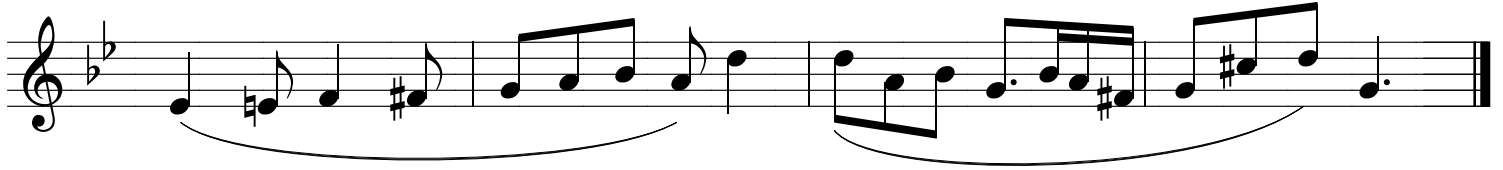
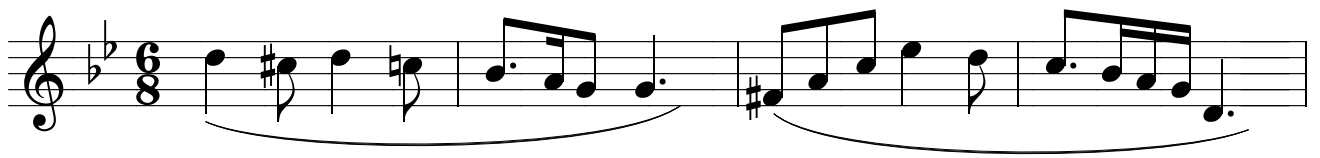
14



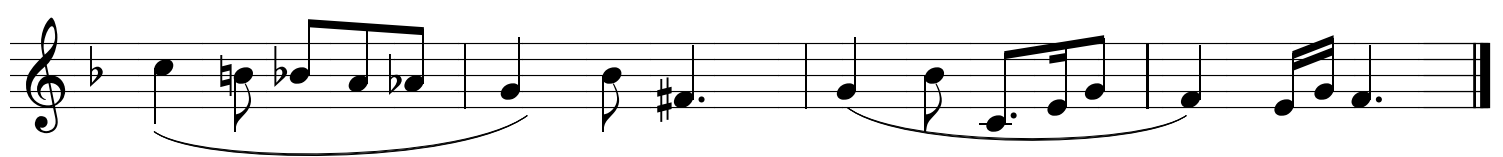
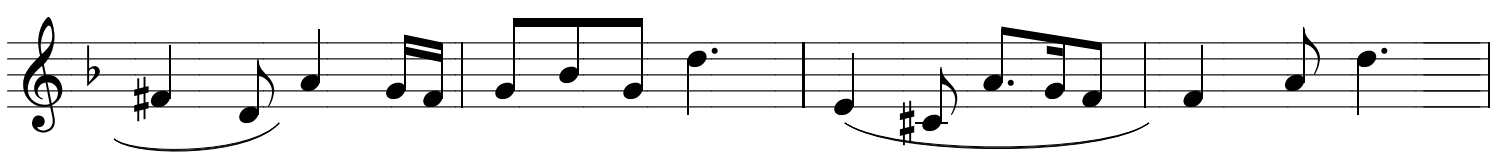
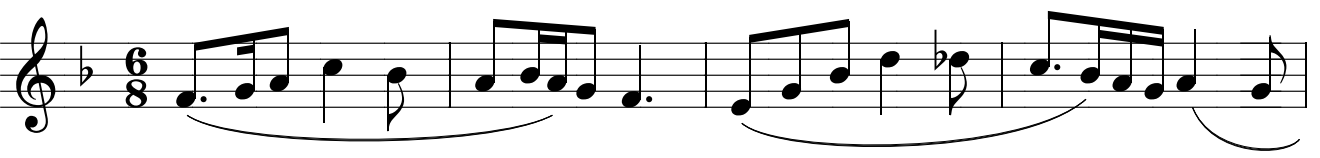
15



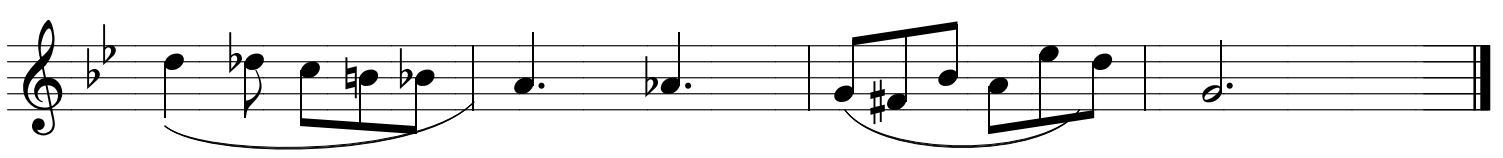
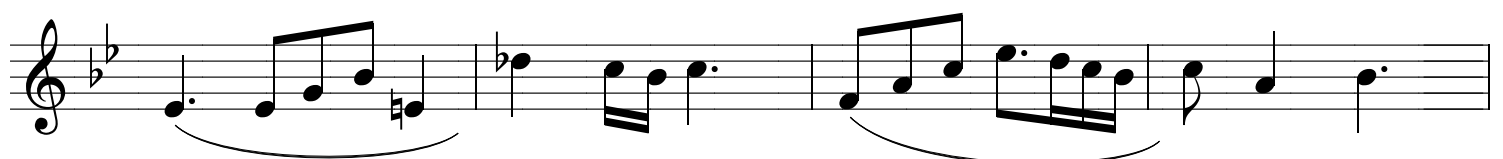
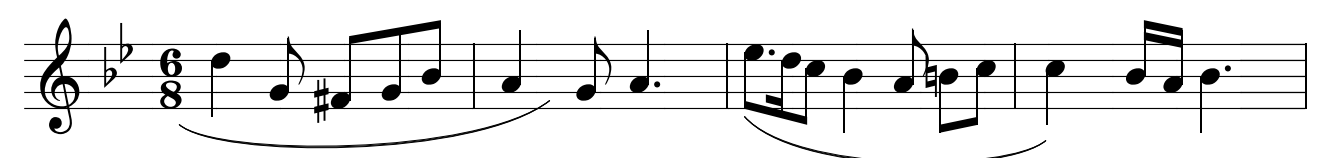
16



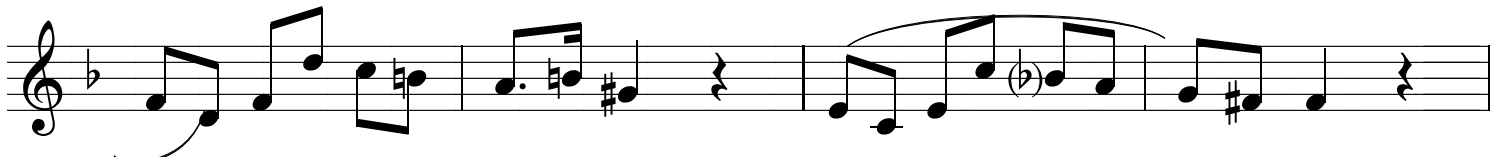
17

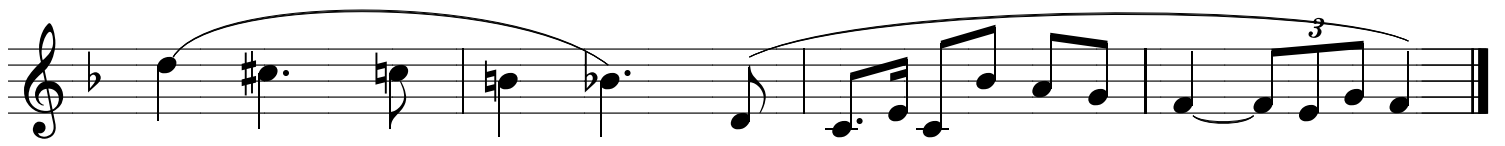


18

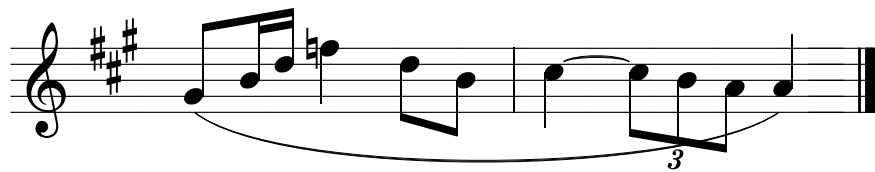
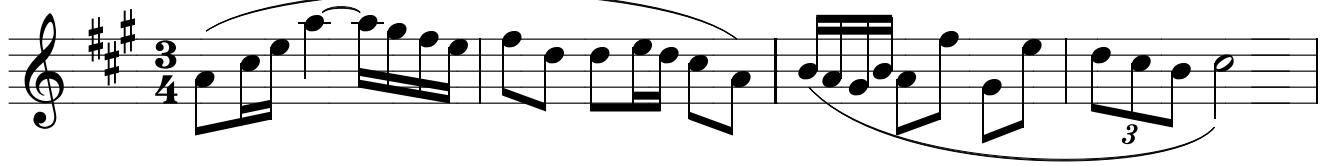


19

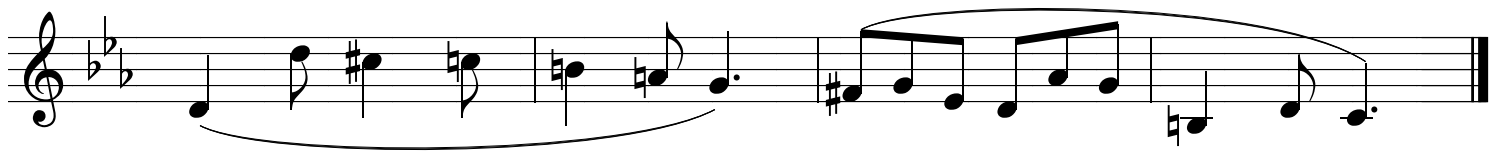
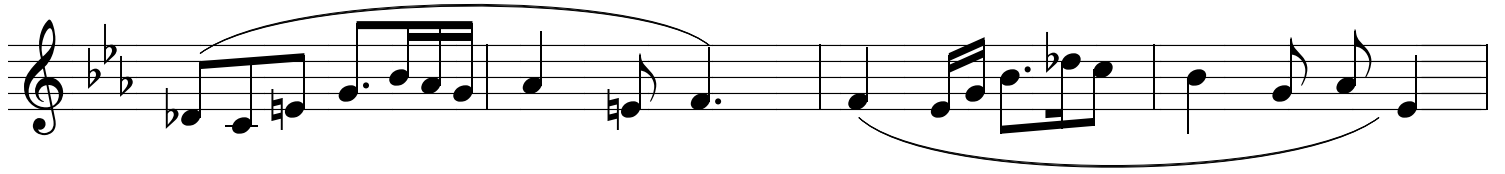




20



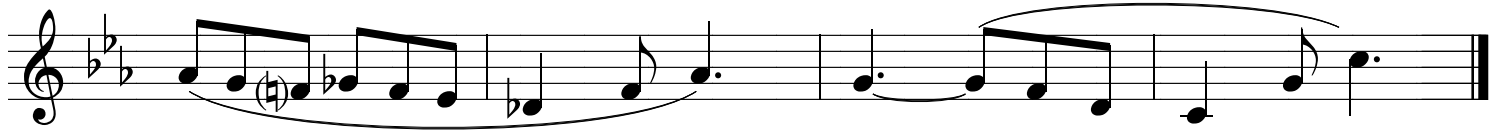
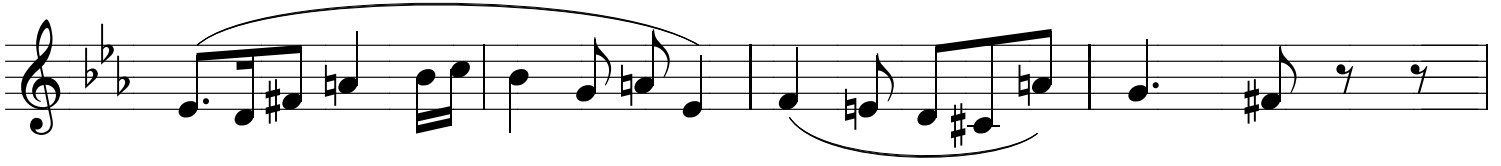
21



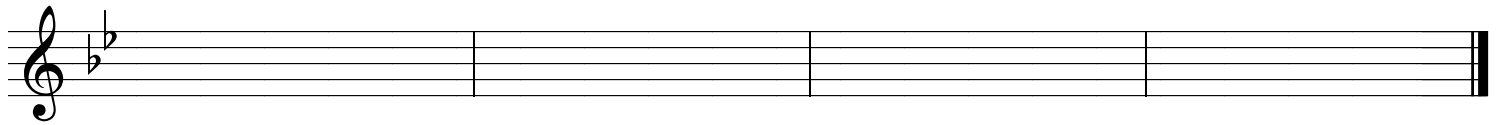
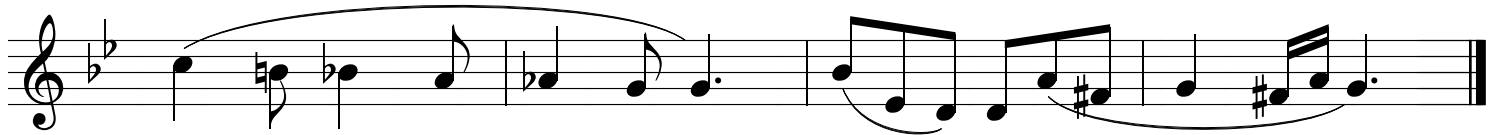
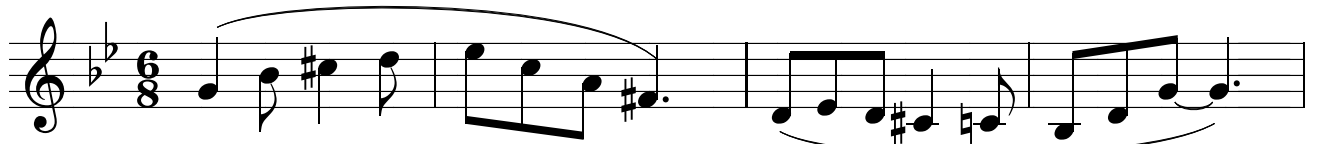
22



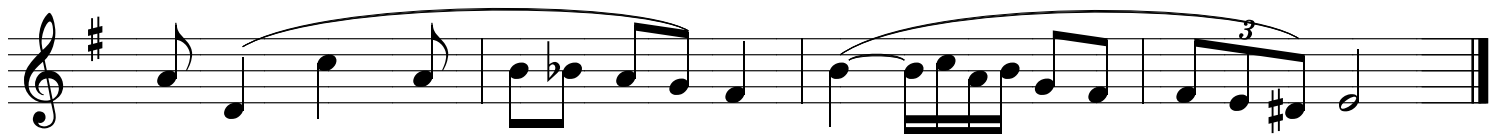
23



24

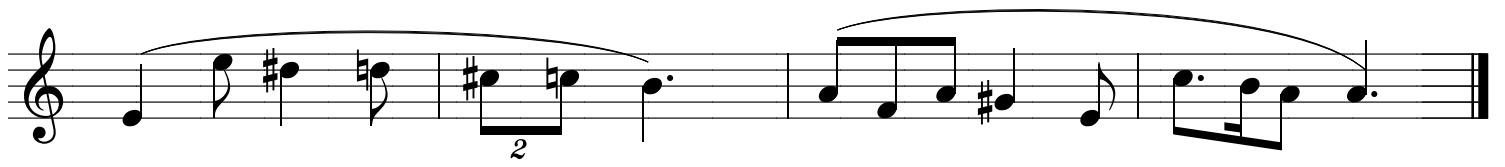


25

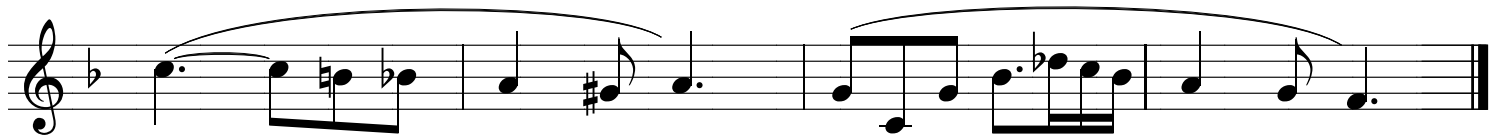


26

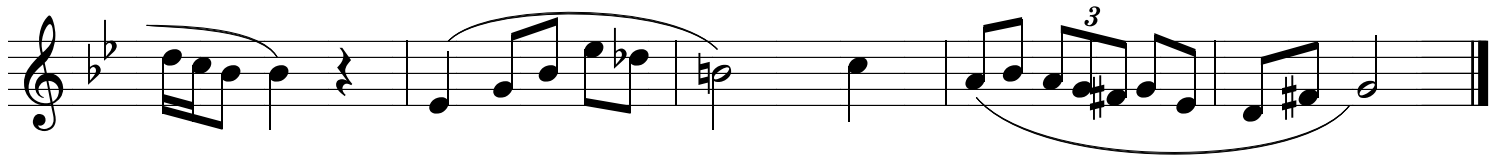
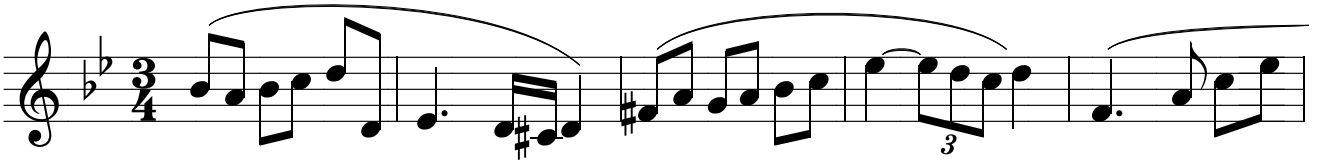




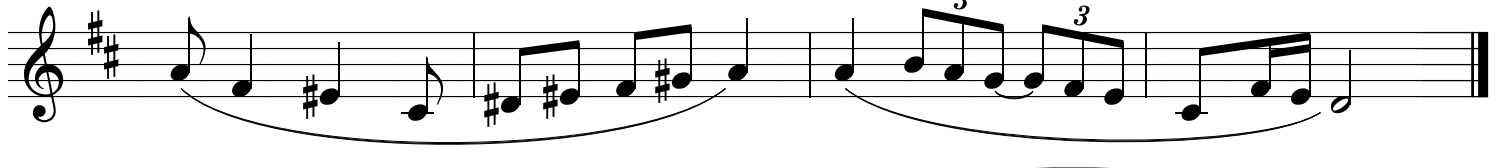
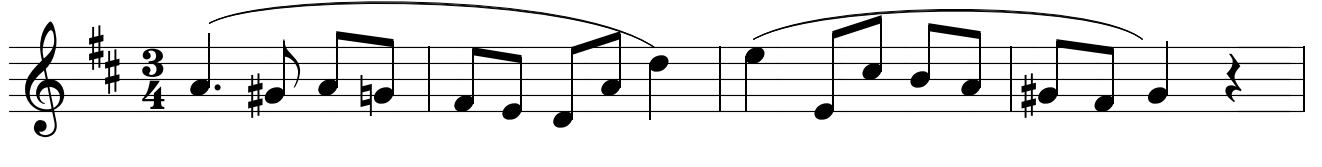
27



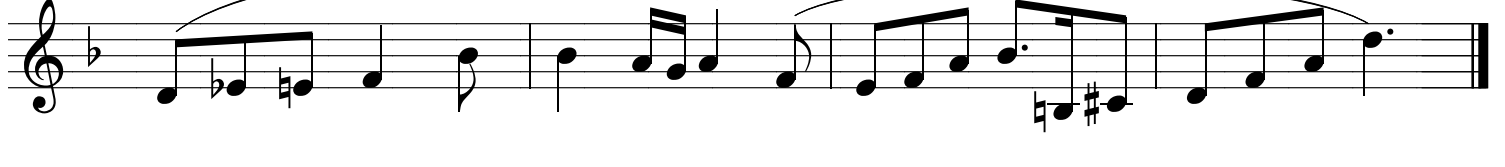
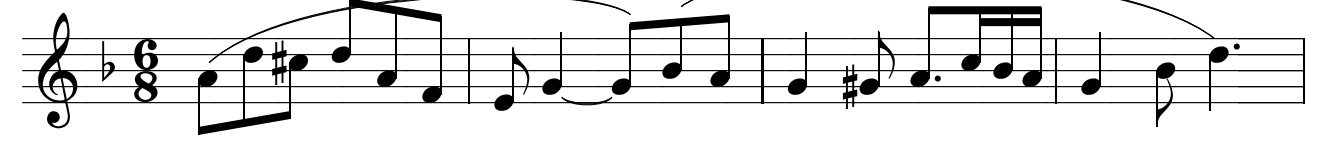
28



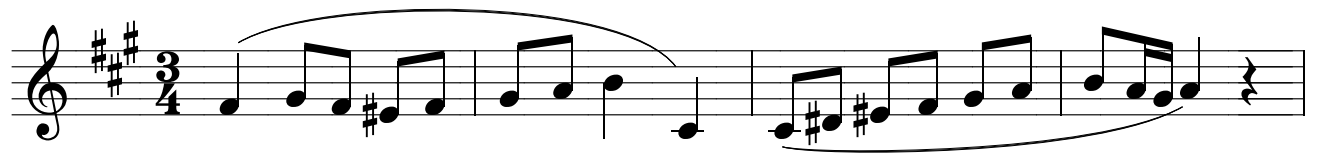
29

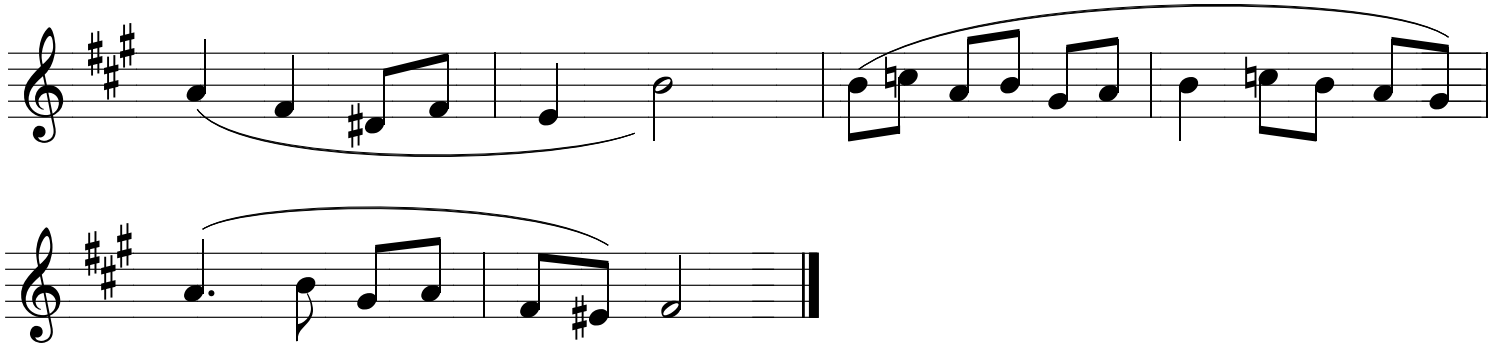


30

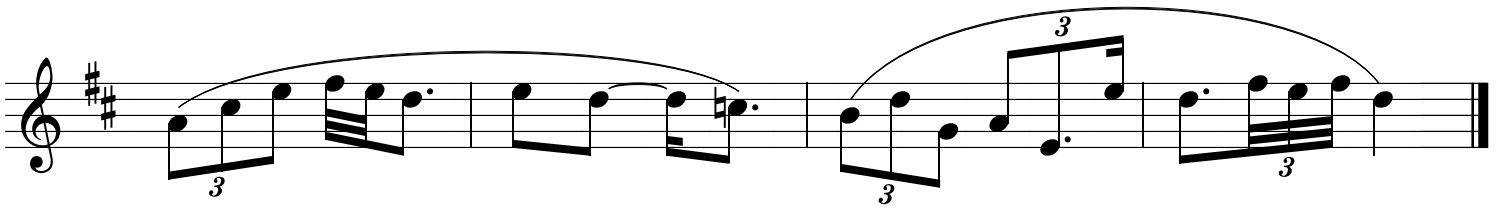
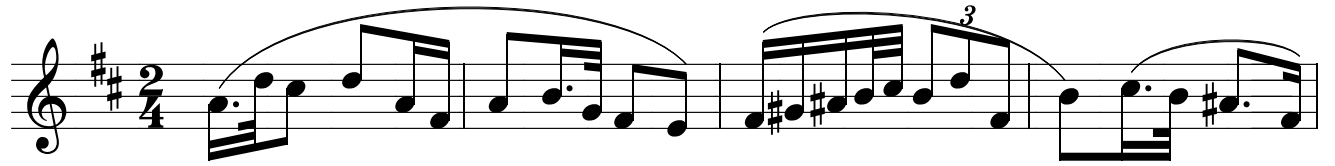


31

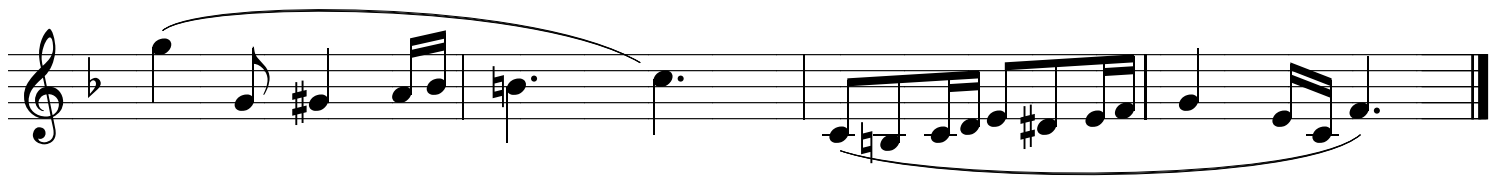
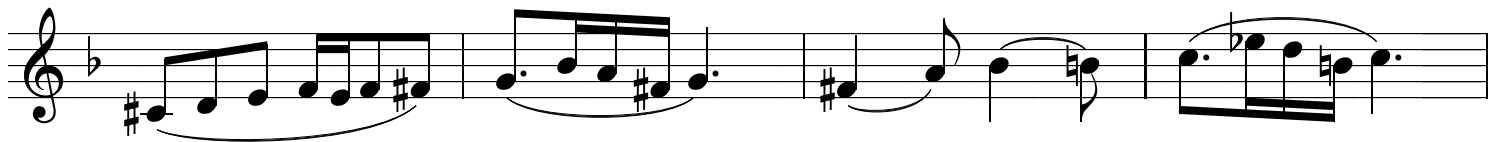




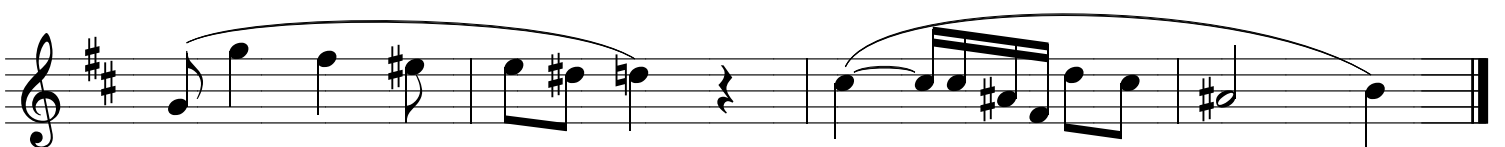
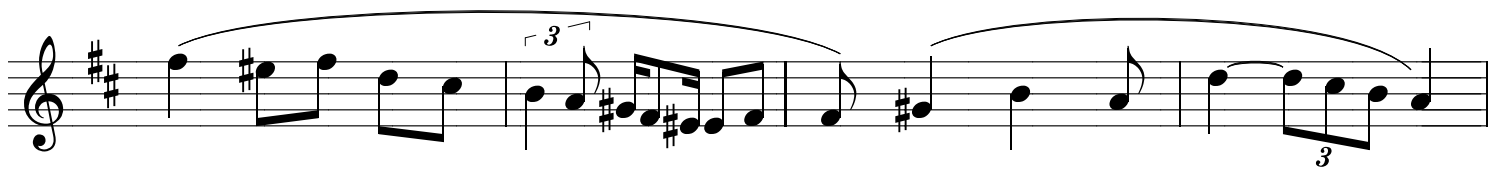
32



33

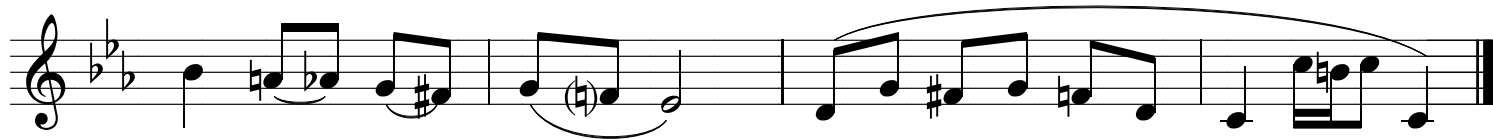


34

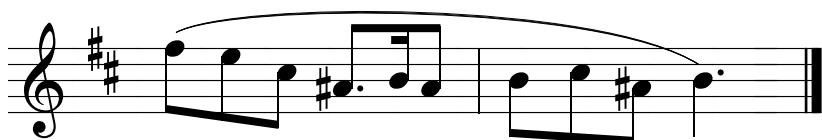
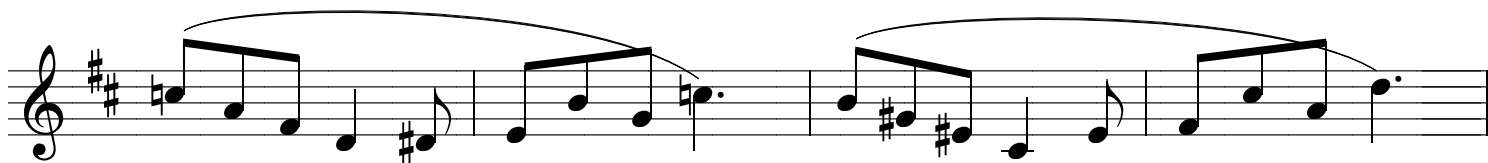
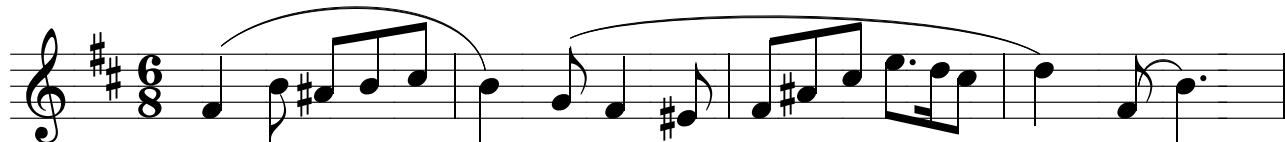




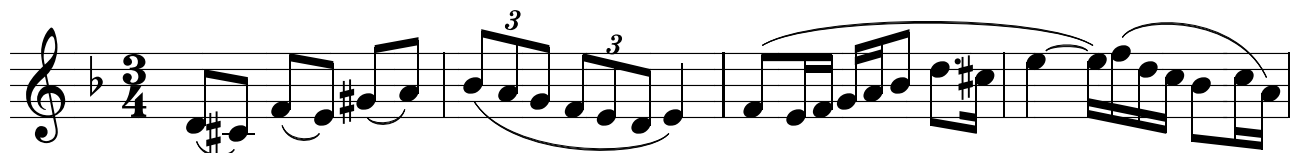
35



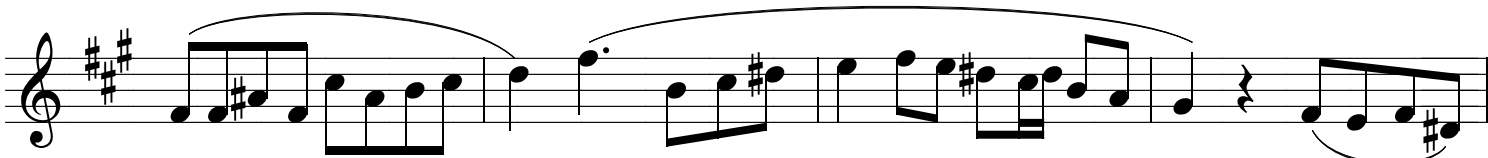
36

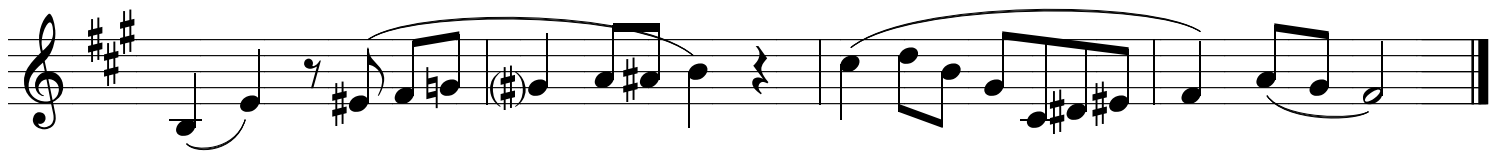


37

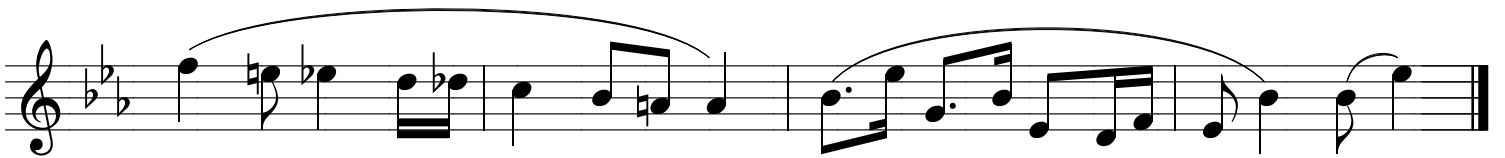
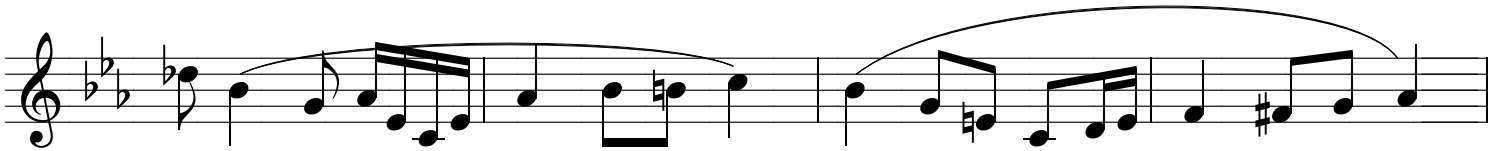


38

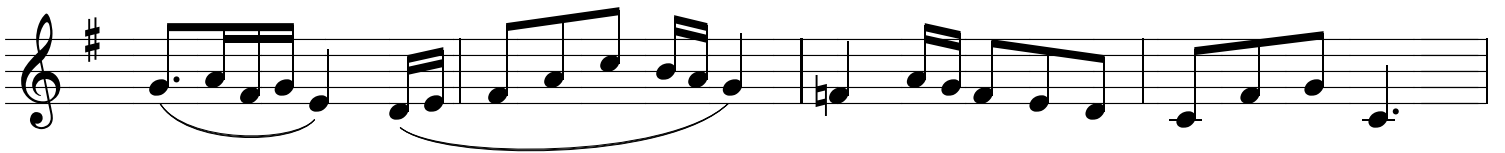
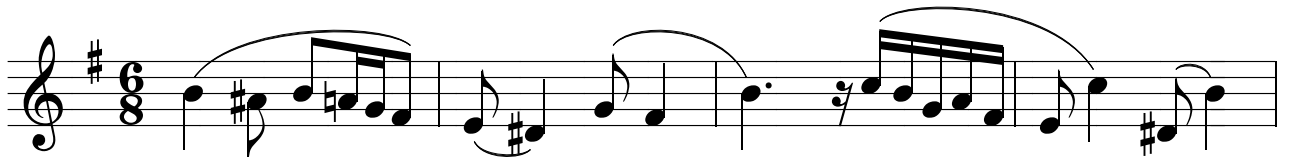




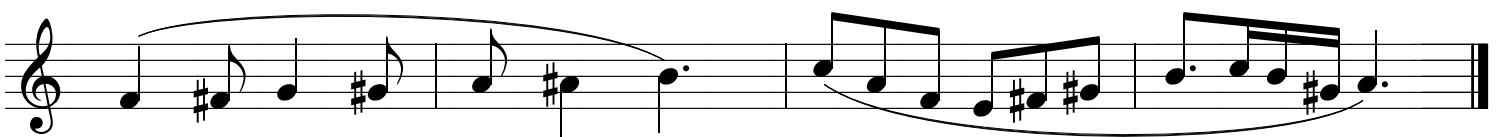
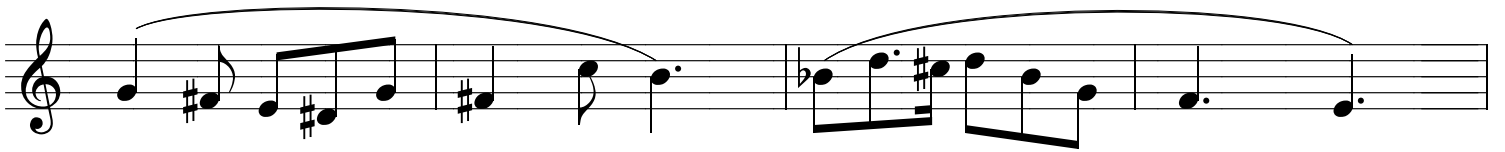
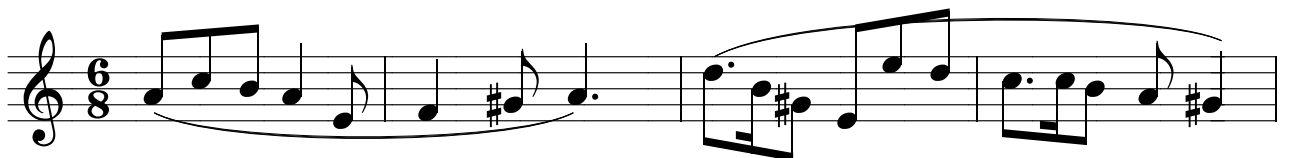
39



40



41



42

Exercise 42, first system: Treble clef, key signature of two sharps (F# and C#), 3/4 time signature. The melody consists of eighth and quarter notes, with a slur over the first two measures and a triplet of eighth notes in the third measure.

Exercise 42, second system: Continuation of the melody from the first system, featuring a triplet of eighth notes in the second measure.

43

Exercise 43, first system: Treble clef, key signature of two flats (Bb and Eb), common time (C). The melody includes quarter notes, eighth notes, and rests, with a slur over the first two measures.

Exercise 43, second system: Continuation of the melody from the first system, featuring eighth notes and quarter notes with slurs.

Exercise 43, third system: Continuation of the melody from the first system, ending with a quarter note and a fermata.

44

Exercise 44, first system: Treble clef, key signature of two sharps (F# and C#), 9/8 time signature. The melody consists of eighth and quarter notes, with a slur over the first two measures.

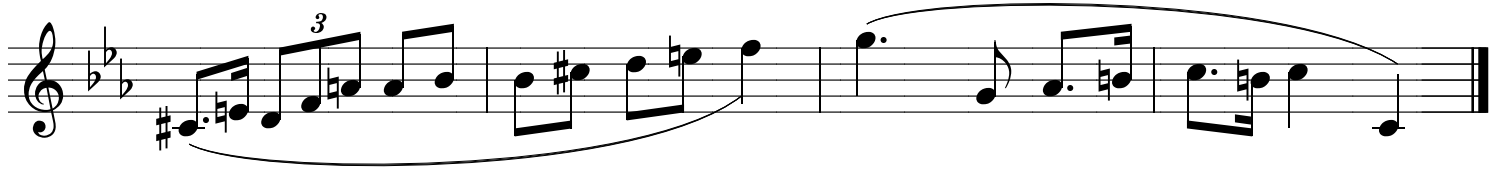
Exercise 44, second system: Continuation of the melody from the first system, featuring eighth notes and quarter notes with slurs.

Exercise 44, third system: Continuation of the melody from the first system, ending with a quarter note and a fermata.

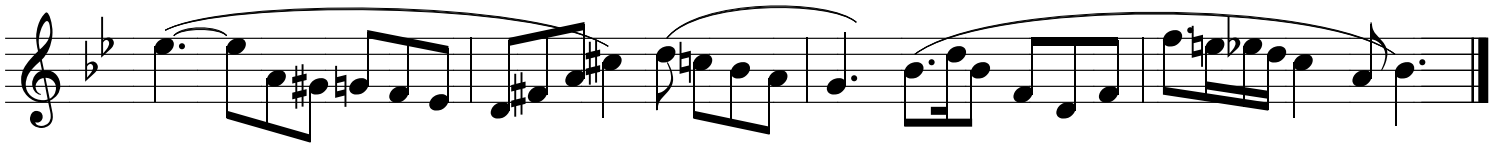
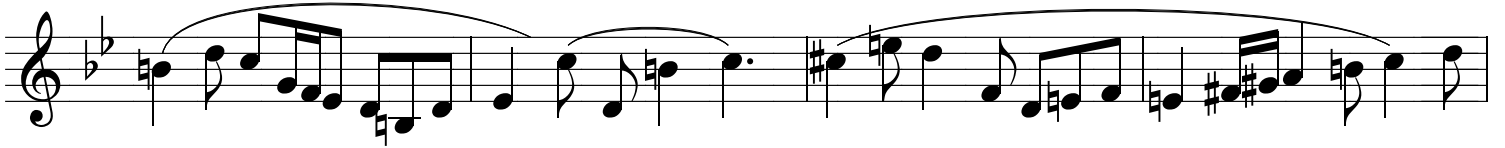
45

Exercise 45, first system: Treble clef, key signature of three flats (Bb, Eb, and Ab), 3/4 time signature. The melody consists of quarter and eighth notes, with a slur over the first two measures and a triplet of eighth notes in the third measure.

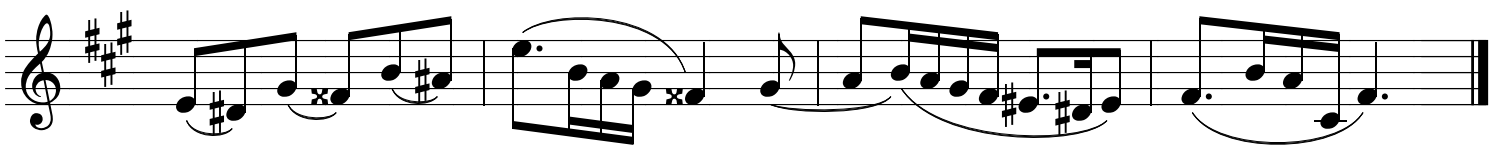
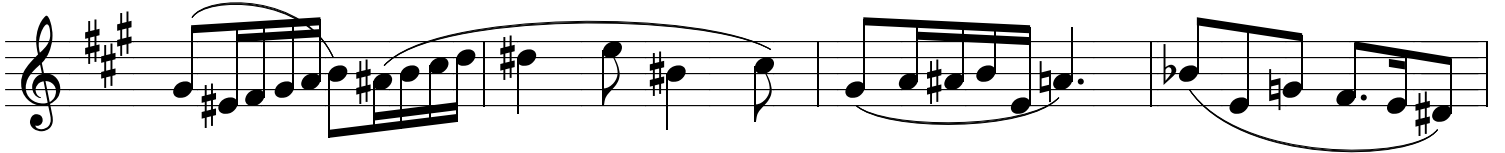
Exercise 45, second system: Continuation of the melody from the first system, featuring quarter and eighth notes with slurs.



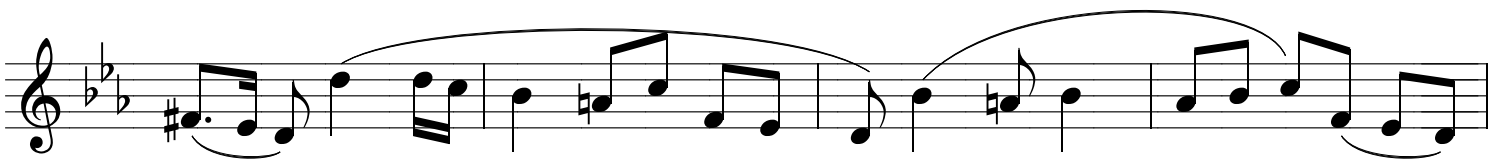
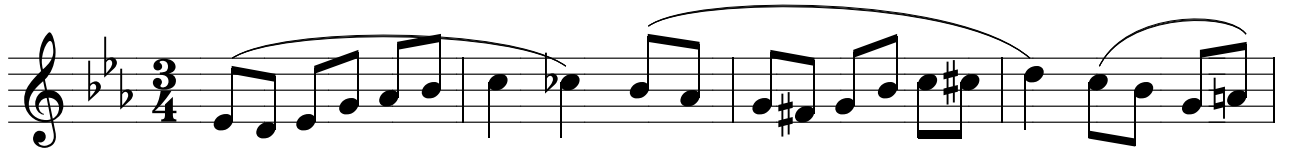
46



47



48



49

Exercise 49, first system: Treble clef, key signature of one sharp (F#), 9/8 time signature. The melody consists of eighth and sixteenth notes, with a slur over the first two measures.

50

Exercise 50, first system: Treble clef, key signature of two flats (Bb, Eb), 3/4 time signature. The melody features eighth and sixteenth notes, including a triplet of eighth notes in the second measure.

51

Exercise 51, first system: Treble clef, key signature of three sharps (F#, C#, G#), common time (C). The melody consists of eighth and sixteenth notes.

52

Exercise 52, first system: Treble clef, key signature of two flats (Bb, Eb), 6/8 time signature. The melody consists of eighth and sixteenth notes.

Two staves of musical notation. The first staff contains exercise 51, and the second staff contains exercise 52. Both exercises are in a key signature of two flats (B-flat and E-flat) and a common time signature. The notation includes various note values, rests, and slurs.

53

Staff of musical notation for exercise 53. The key signature is one sharp (F#) and the time signature is 3/4. The exercise consists of a single line of music with various note values and slurs.

Continuation of exercise 53, featuring a triplet of eighth notes and a slur over the final notes.

Continuation of exercise 53, featuring a triplet of eighth notes and a slur over the final notes.

54

Staff of musical notation for exercise 54. The key signature is two flats (B-flat and E-flat) and the time signature is 4/4. The exercise consists of a single line of music with various note values and slurs.

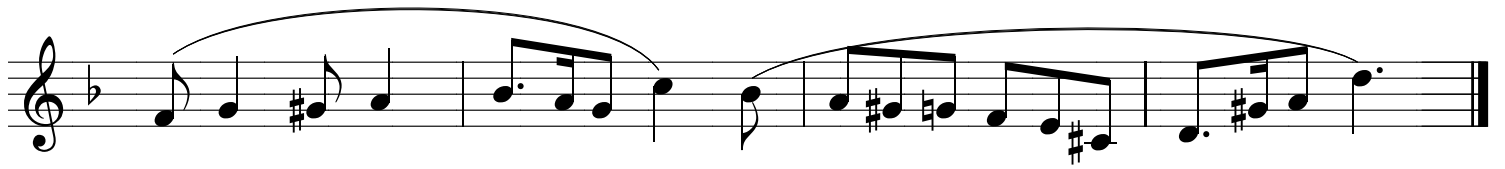
Continuation of exercise 54, featuring a slur over a series of eighth notes.

Continuation of exercise 54, featuring a slur over a series of eighth notes.

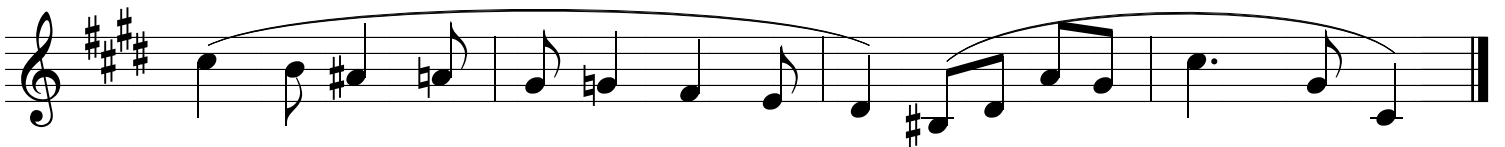
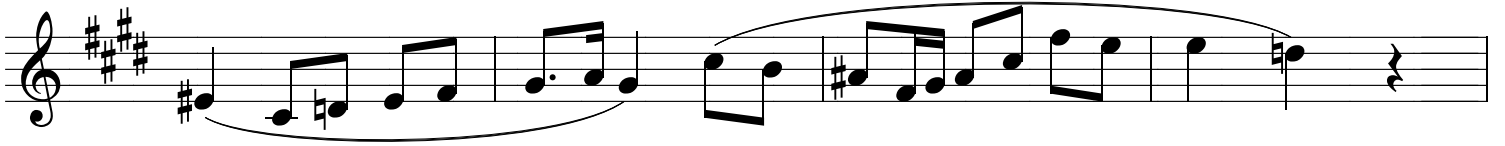
55

Staff of musical notation for exercise 55. The key signature is one flat (B-flat) and the time signature is 6/8. The exercise consists of a single line of music with various note values and slurs.

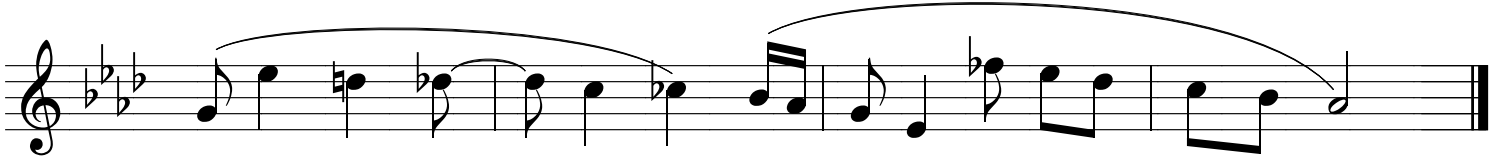
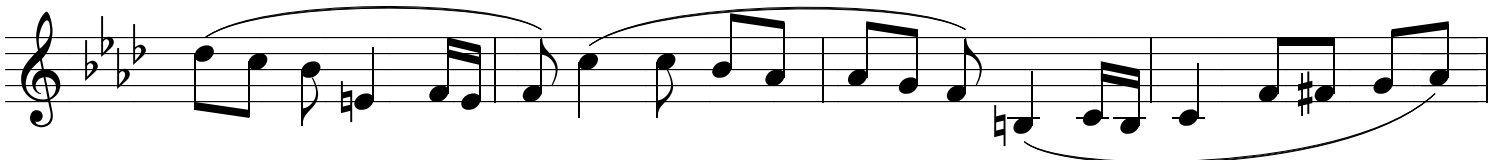
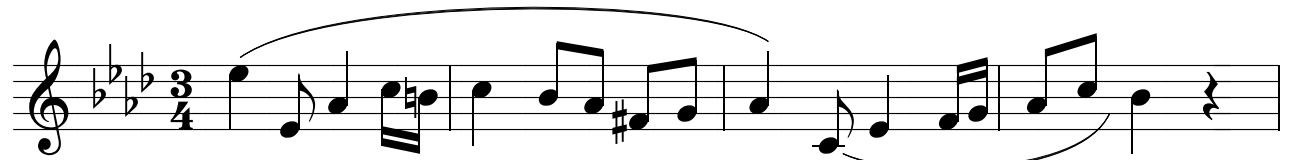
Continuation of exercise 55, featuring a slur over a series of eighth notes.



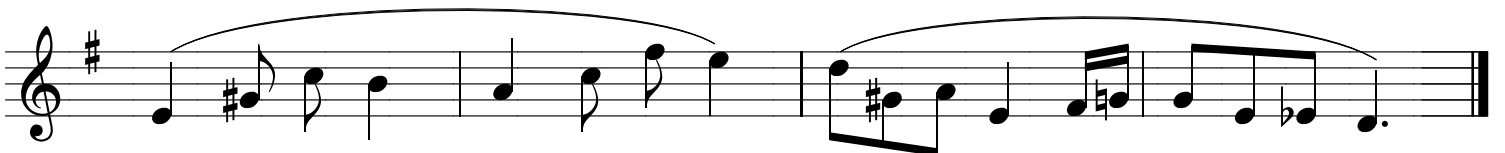
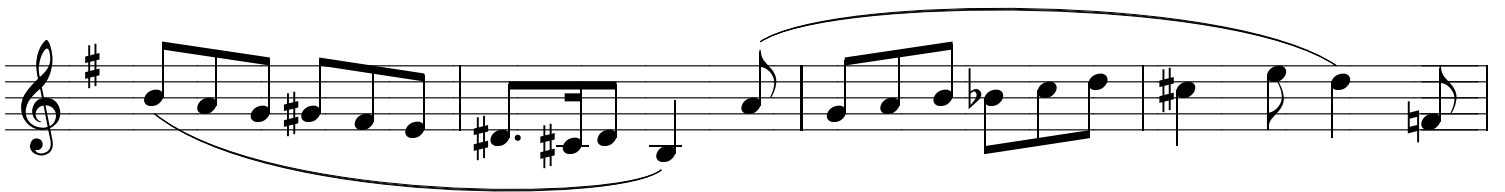
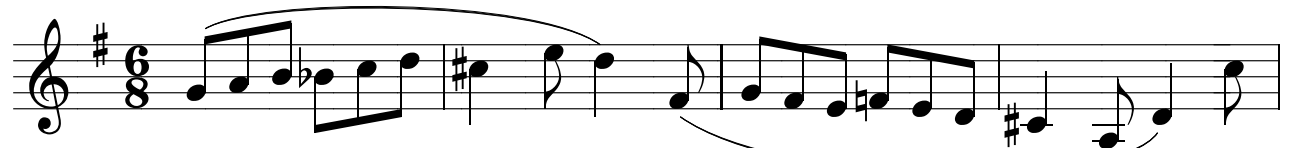
56



57



58







Two staves of musical notation. The first staff contains two measures of music in G major (one sharp) with a 3/4 time signature. It features eighth-note patterns with triplets. The second staff continues the exercise with similar eighth-note patterns and triplets, ending with a double bar line.

63

One staff of musical notation for exercise 63. It is in G major (one sharp) and 3/8 time. The exercise consists of a single measure of music with eighth-note patterns and triplets.

First staff of musical notation for exercise 64. It is in G major (one sharp) and 3/4 time. The exercise consists of two measures of music with eighth-note patterns and triplets.

Second staff of musical notation for exercise 64. It continues the exercise from the first staff with eighth-note patterns and triplets, ending with a double bar line.

64

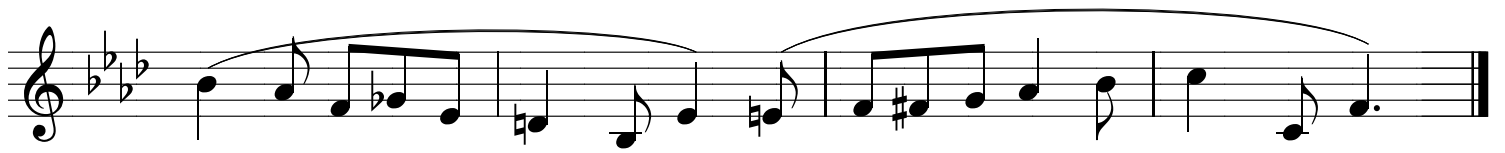
First staff of musical notation for exercise 65. It is in B-flat major (two flats) and 3/4 time. The exercise consists of two measures of music with eighth-note patterns and triplets.

Second staff of musical notation for exercise 65. It continues the exercise from the first staff with eighth-note patterns and triplets, ending with a double bar line.

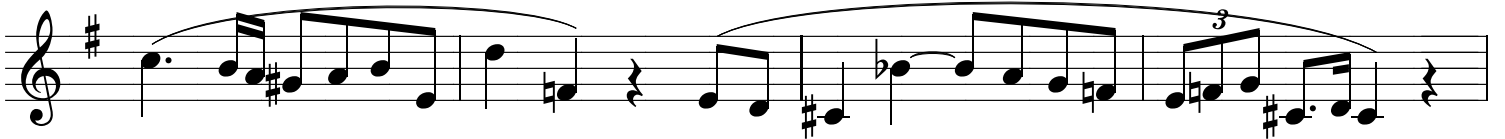
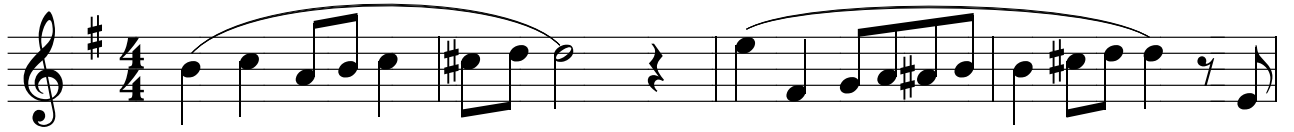
65

First staff of musical notation for exercise 66. It is in B-flat major (two flats) and 6/8 time. The exercise consists of two measures of music with eighth-note patterns and triplets.

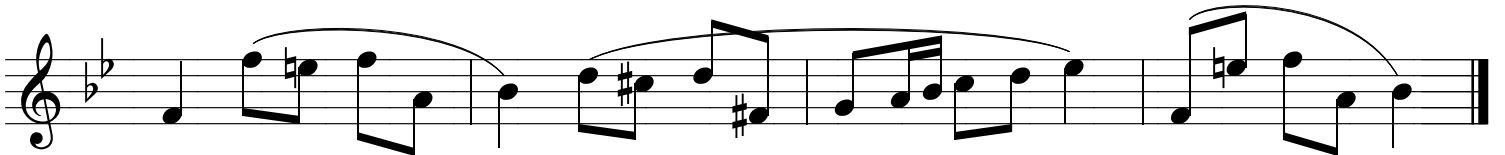
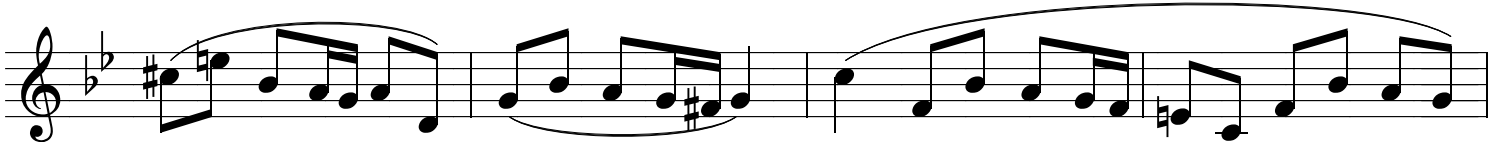
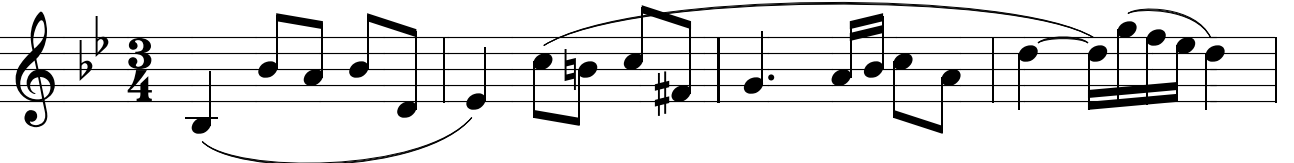
Second staff of musical notation for exercise 66. It continues the exercise from the first staff with eighth-note patterns and triplets, ending with a double bar line.



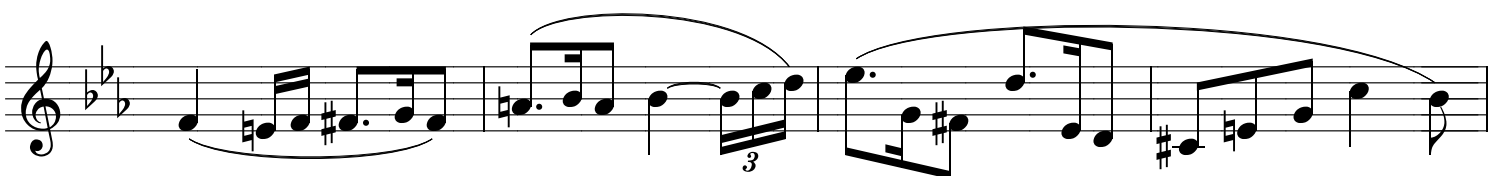
66



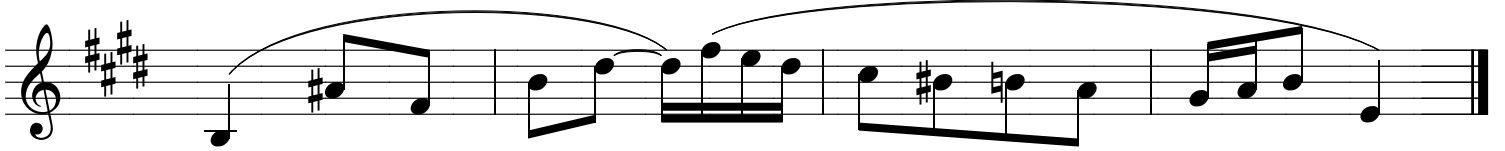
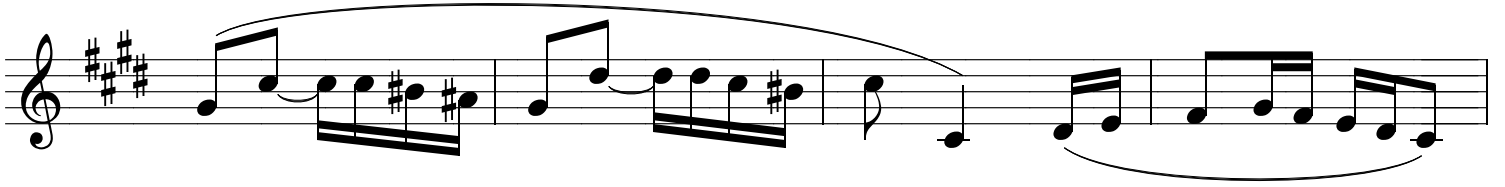
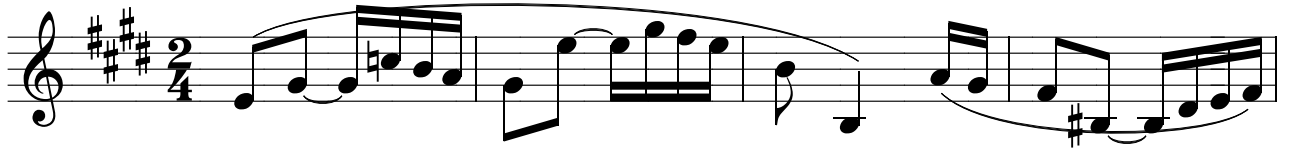
67



68



69



70

