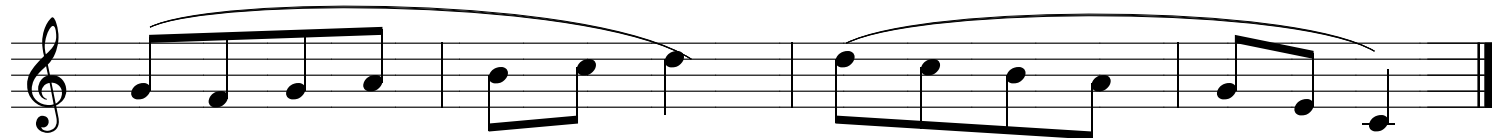
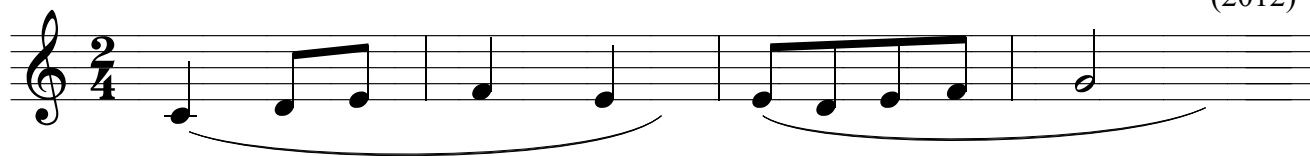


45 Dettati a una voce

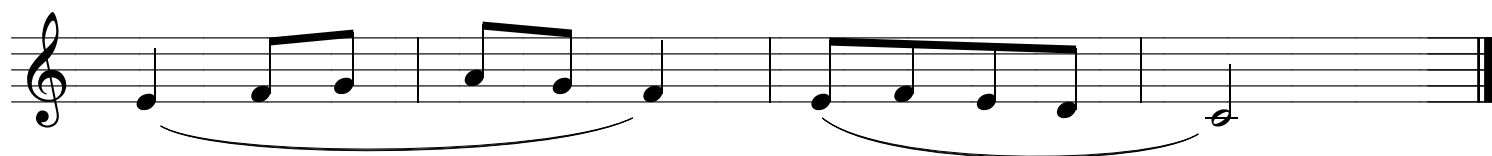
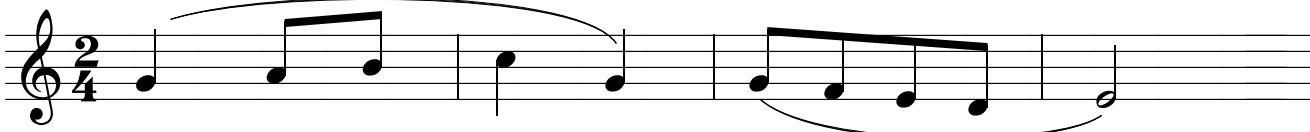
- facili -

G. Guerra
(2012)

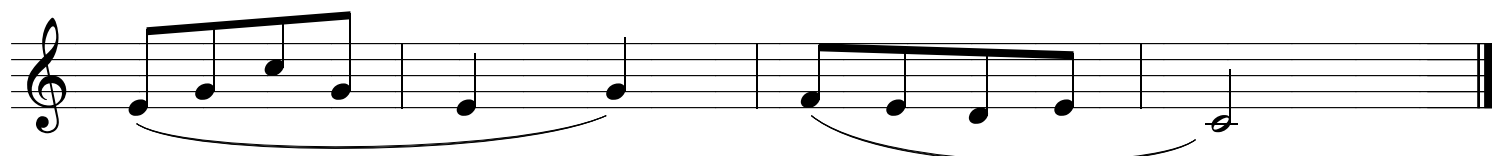
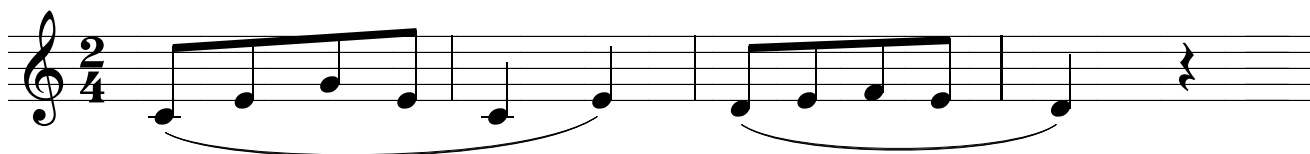
1



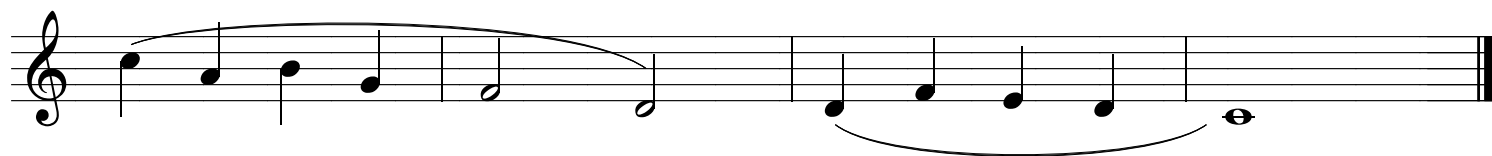
2



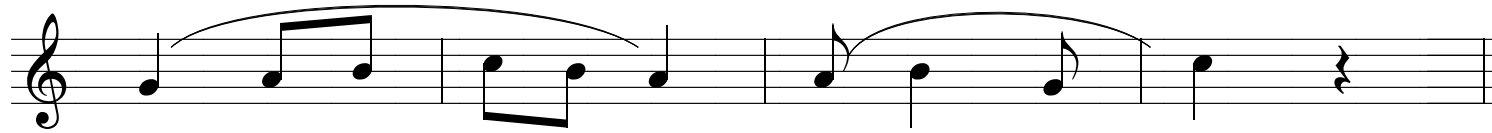
3



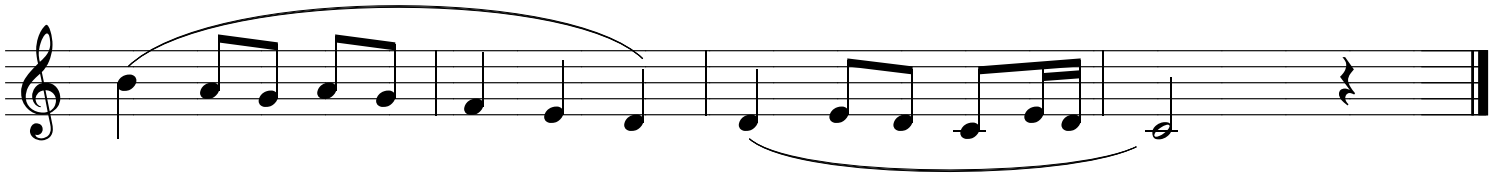
4

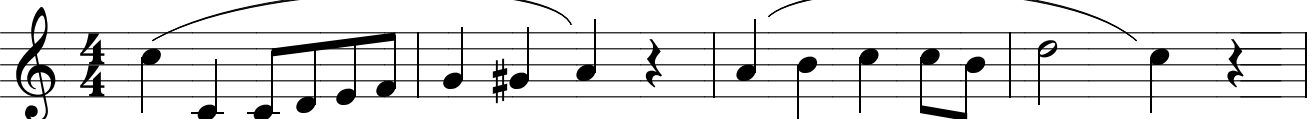


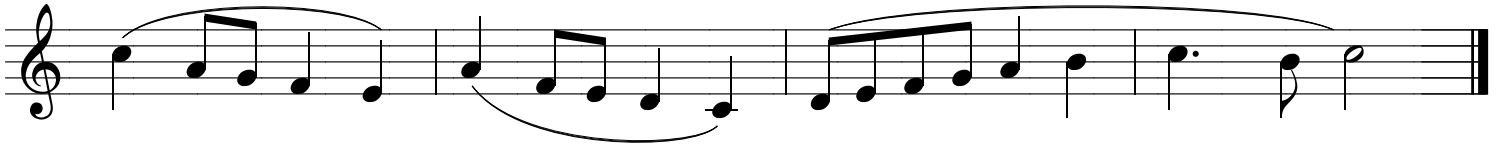
5



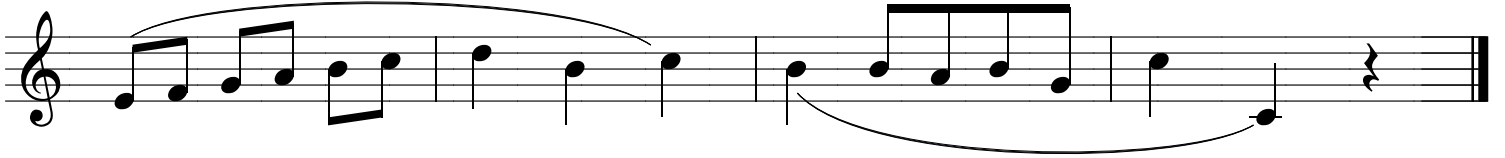
6  Musical staff 6, first line. Treble clef, 3/4 time signature. The staff contains a sequence of notes: G4, A4, B4, C5, B4, A4, G4, F4, E4, D4, C4. There are two slurs: one under G4-A4-B4-C5 and another under F4-E4-D4-C4.

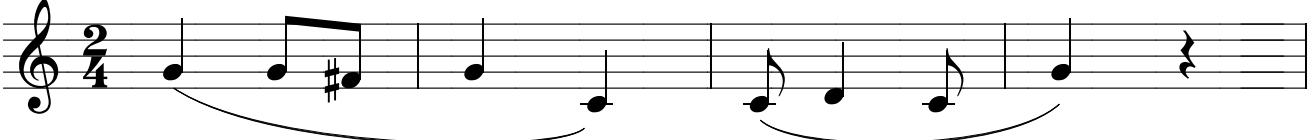
 Musical staff 6, second line. Treble clef. The staff contains a sequence of notes: B3, A3, G3, F3, E3, D3, C3, B2, A2, G2, F2, E2, D2, C2. There are two slurs: one under B3-A3-G3-F3-E3-D3 and another under B2-A2-G2-F2-E2-D2.

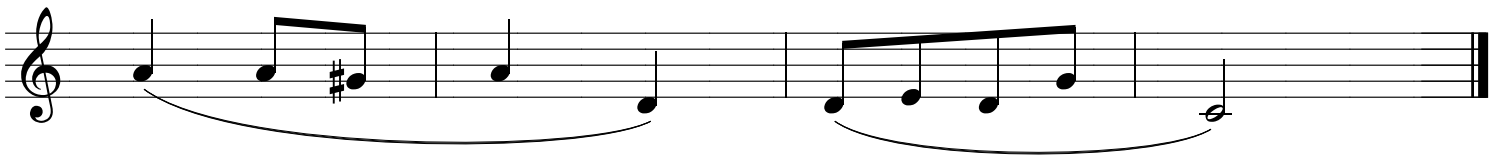
7  Musical staff 7, first line. Treble clef, 4/4 time signature. The staff contains a sequence of notes: G4, A4, B4, C5, B4, A4, G4, F4, E4, D4, C4, B3, A3, G3, F3, E3, D3, C3. There are two slurs: one under G4-A4-B4-C5-B4-A4-G4 and another under F3-E3-D3-C3.

 Musical staff 7, second line. Treble clef. The staff contains a sequence of notes: B3, A3, G3, F3, E3, D3, C3, B2, A2, G2, F2, E2, D2, C2, B1, A1, G1, F1, E1, D1, C1. There are two slurs: one under B3-A3-G3-F3-E3-D3 and another under B2-A2-G2-F2-E2-D2.

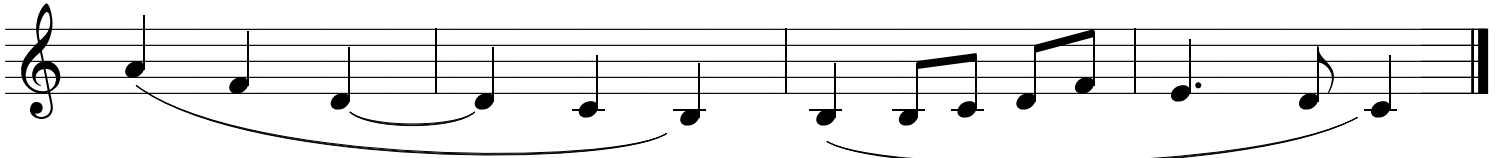
8  Musical staff 8, first line. Treble clef, 3/4 time signature. The staff contains a sequence of notes: G4, A4, B4, C5, B4, A4, G4, F4, E4, D4, C4, B3, A3, G3, F3, E3, D3, C3. There are two slurs: one under G4-A4-B4-C5-B4-A4-G4 and another under F3-E3-D3-C3.

 Musical staff 8, second line. Treble clef. The staff contains a sequence of notes: B3, A3, G3, F3, E3, D3, C3, B2, A2, G2, F2, E2, D2, C2, B1, A1, G1, F1, E1, D1, C1. There are two slurs: one under B3-A3-G3-F3-E3-D3 and another under B2-A2-G2-F2-E2-D2.

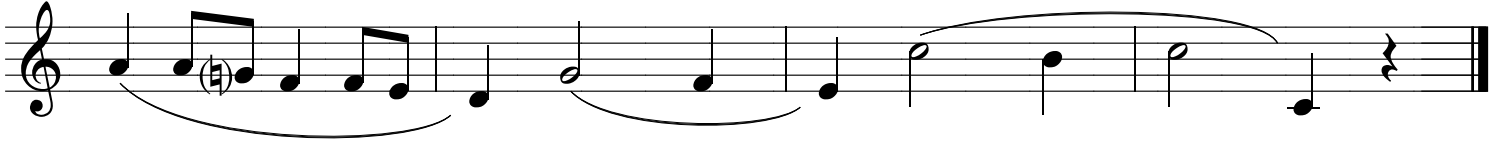
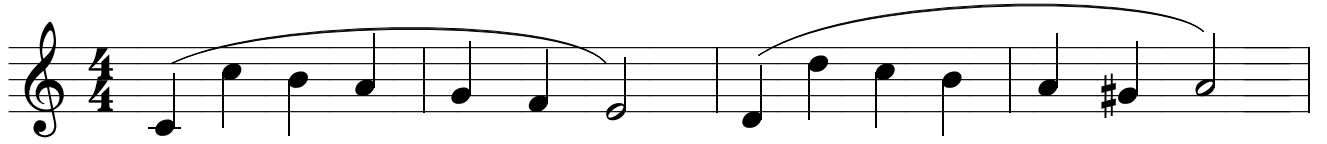
9  Musical staff 9, first line. Treble clef, 2/4 time signature. The staff contains a sequence of notes: G4, A4, B4, C5, B4, A4, G4, F4, E4, D4, C4, B3, A3, G3, F3, E3, D3, C3. There are two slurs: one under G4-A4-B4-C5-B4-A4-G4 and another under F3-E3-D3-C3.

 Musical staff 9, second line. Treble clef. The staff contains a sequence of notes: B3, A3, G3, F3, E3, D3, C3, B2, A2, G2, F2, E2, D2, C2, B1, A1, G1, F1, E1, D1, C1. There are two slurs: one under B3-A3-G3-F3-E3-D3 and another under B2-A2-G2-F2-E2-D2.

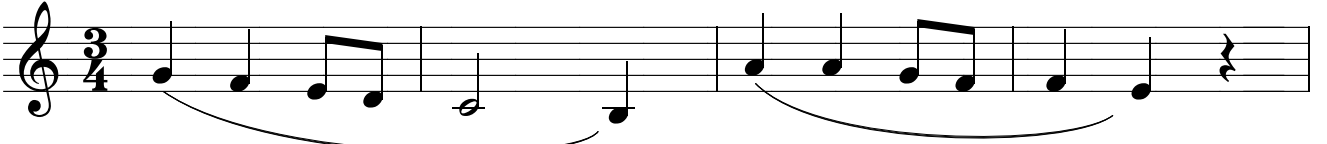
10  Musical staff 10, first line. Treble clef, 3/4 time signature. The staff contains a sequence of notes: G4, A4, B4, C5, B4, A4, G4, F4, E4, D4, C4, B3, A3, G3, F3, E3, D3, C3. There are two slurs: one under G4-A4-B4-C5-B4-A4-G4 and another under F3-E3-D3-C3.

 Musical staff 10, second line. Treble clef. The staff contains a sequence of notes: B3, A3, G3, F3, E3, D3, C3, B2, A2, G2, F2, E2, D2, C2, B1, A1, G1, F1, E1, D1, C1. There are two slurs: one under B3-A3-G3-F3-E3-D3 and another under B2-A2-G2-F2-E2-D2.

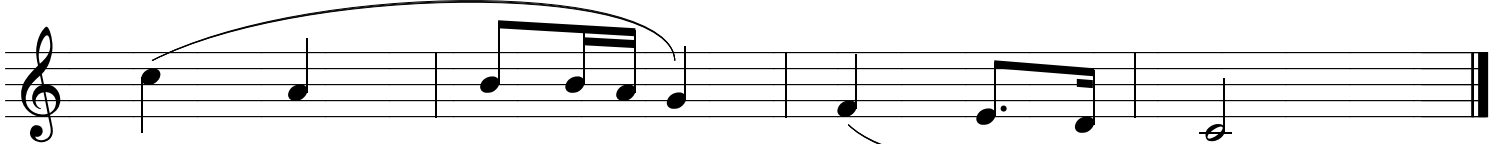
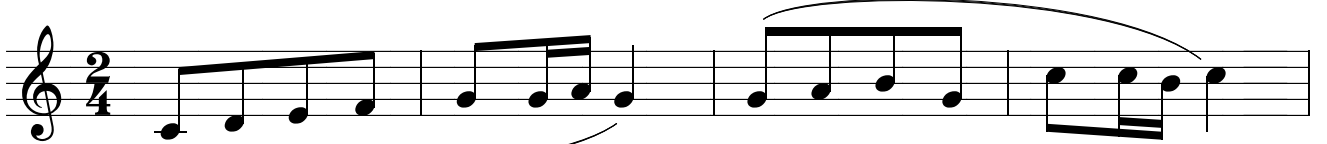
11



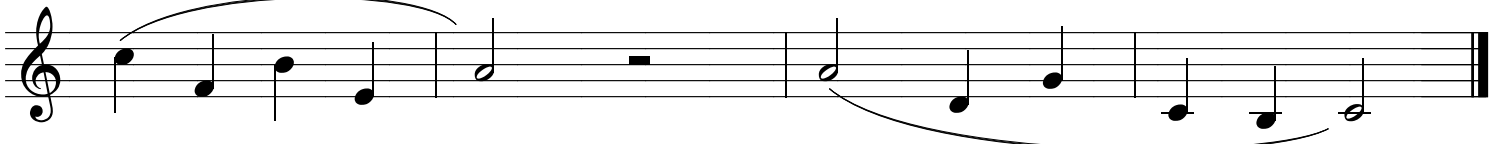
12



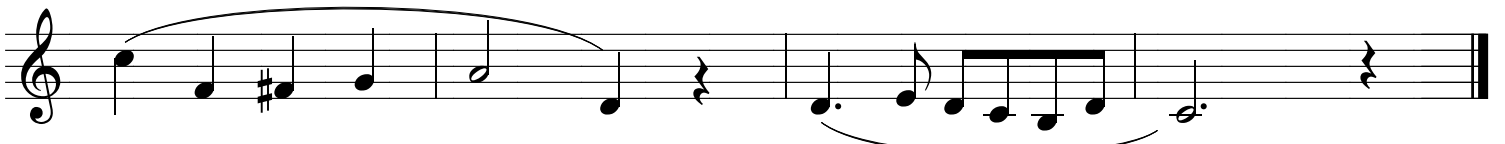
13



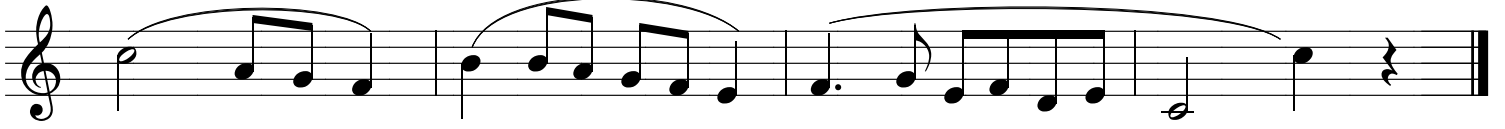
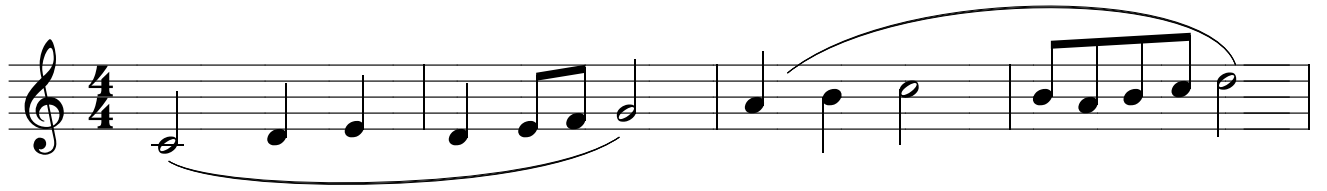
14



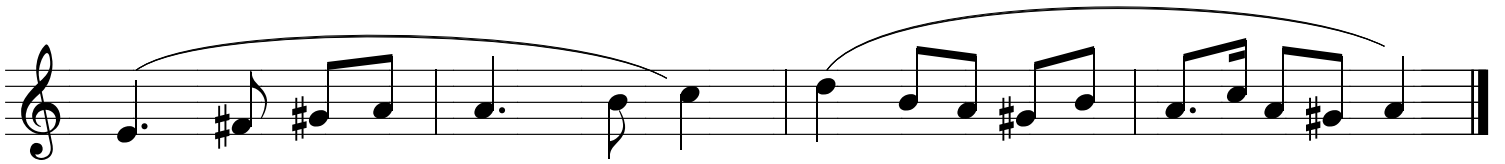
15



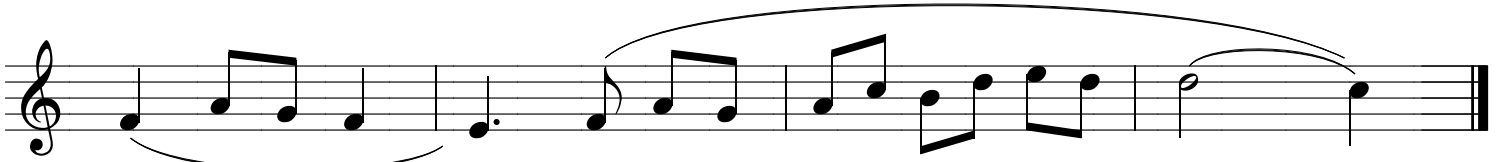
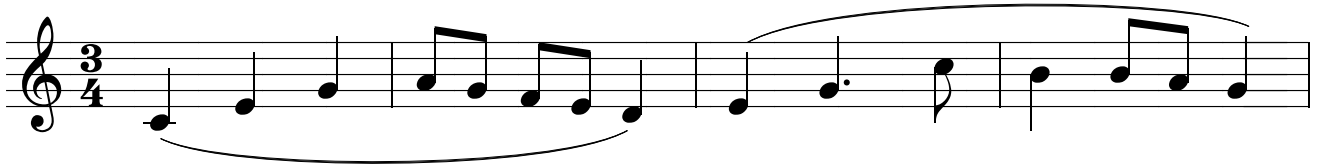
16



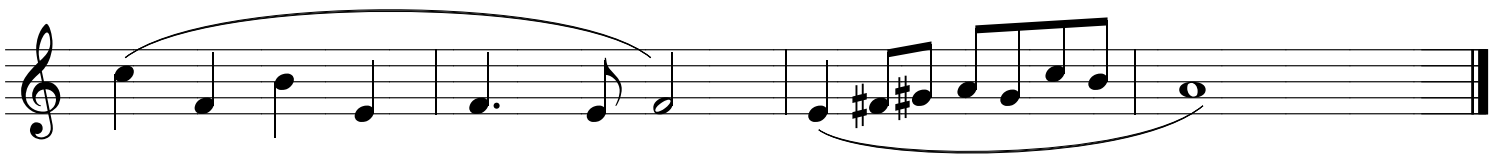
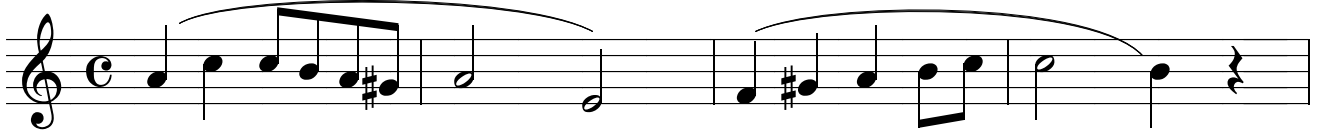
17



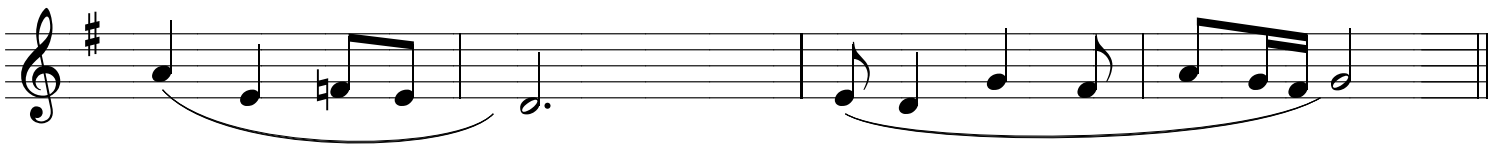
18



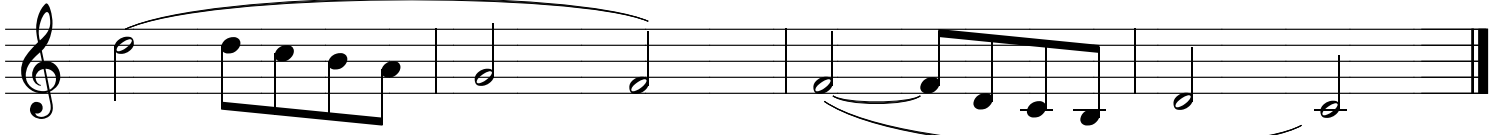
19



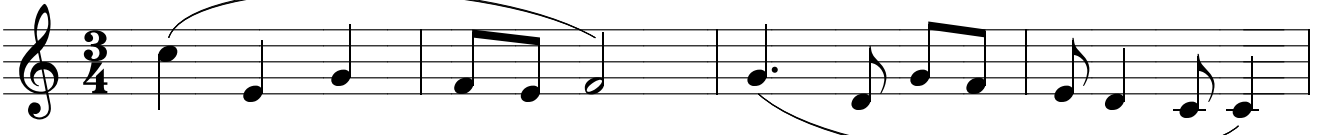
20



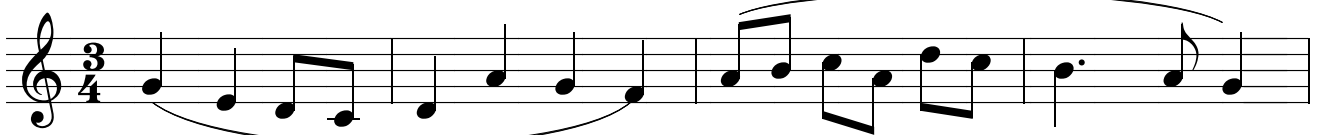
21



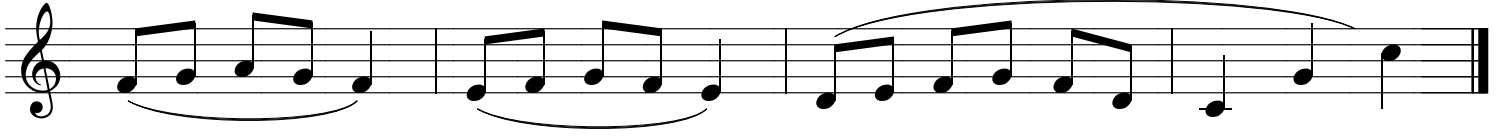
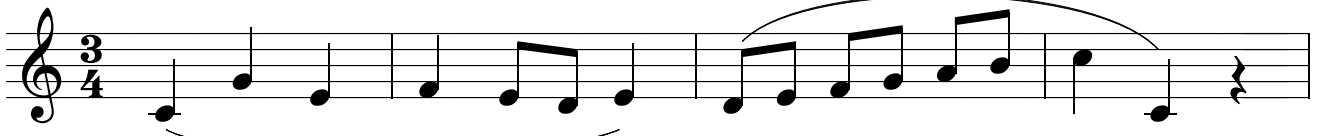
22



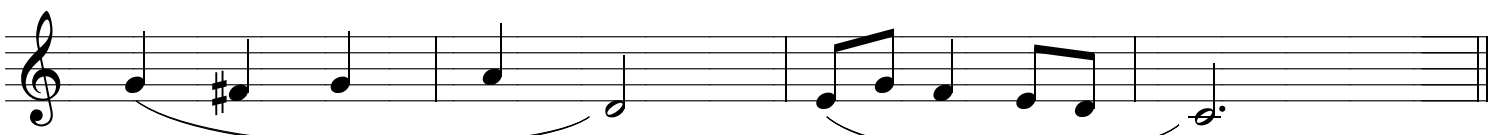
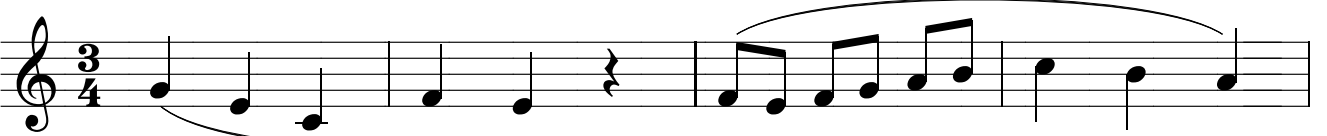
23



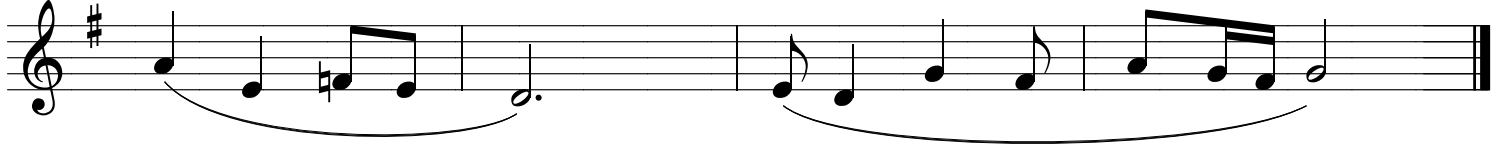
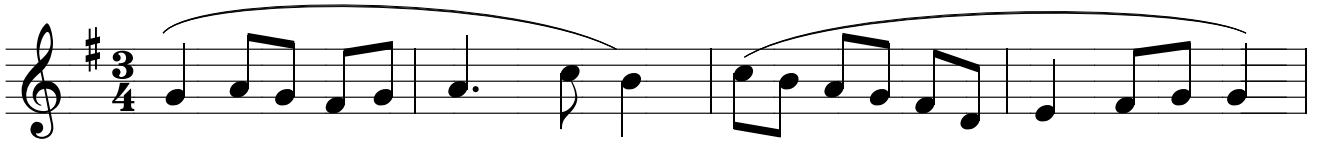
24



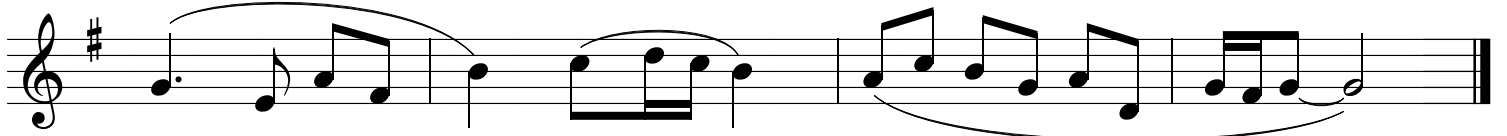
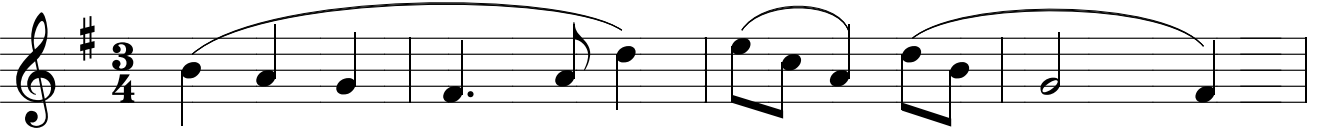
25



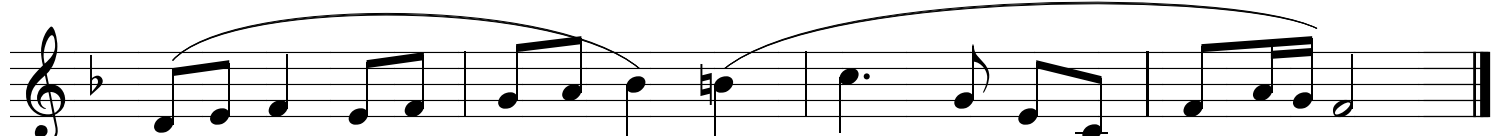
26



27



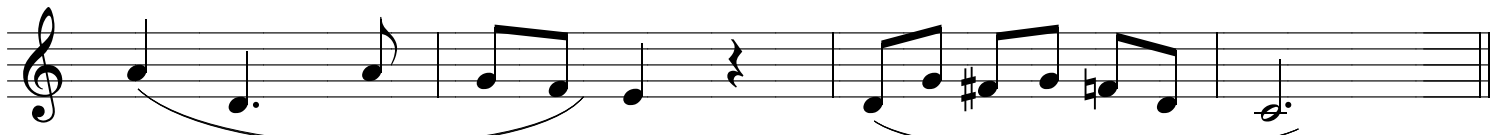
28



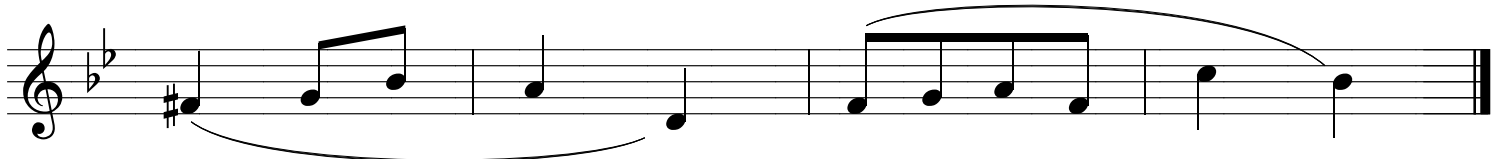
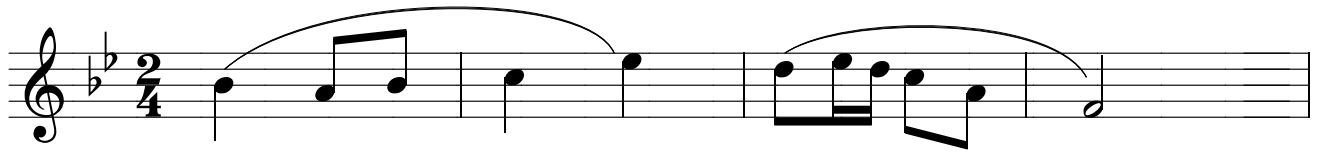
29



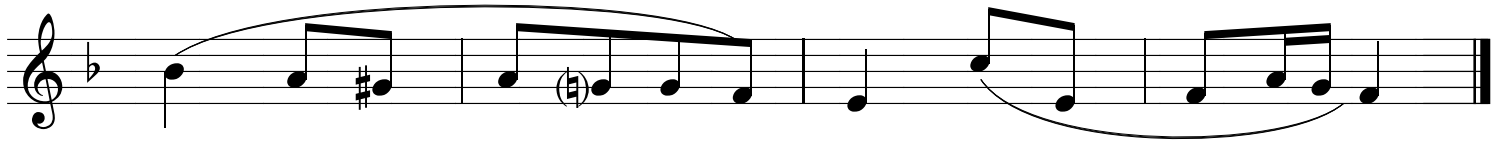
30



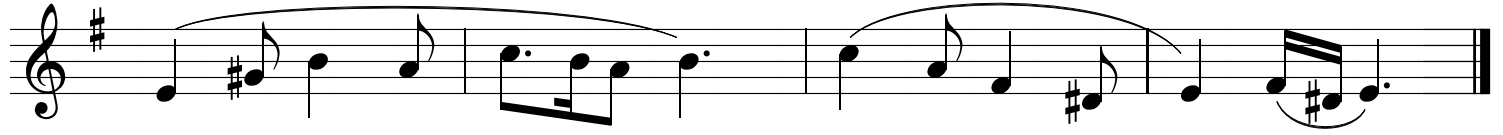
31



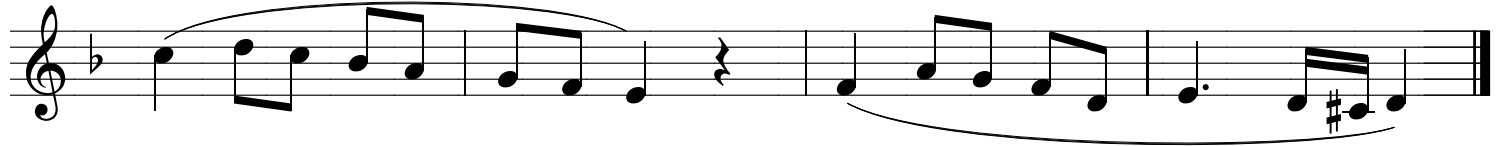
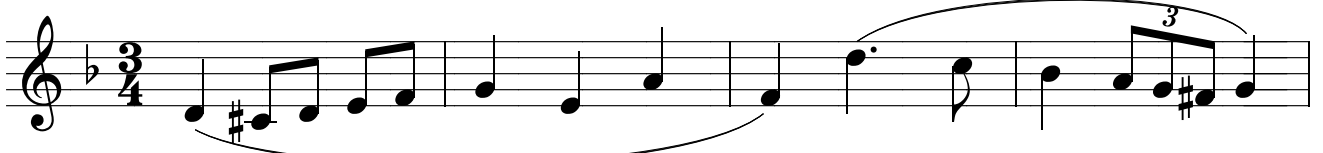
32



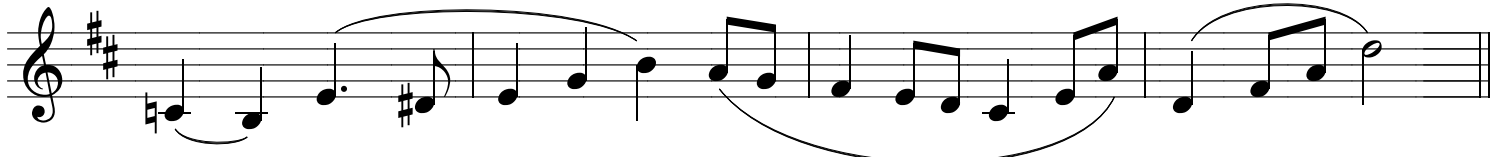
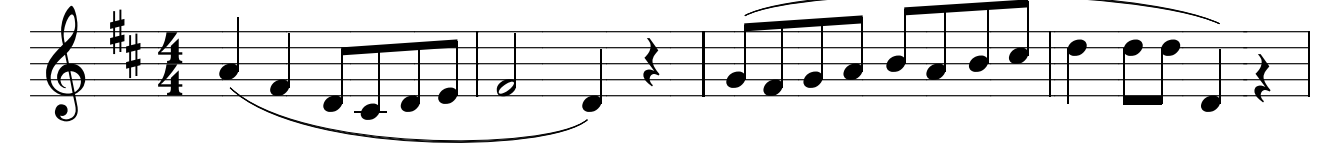
33



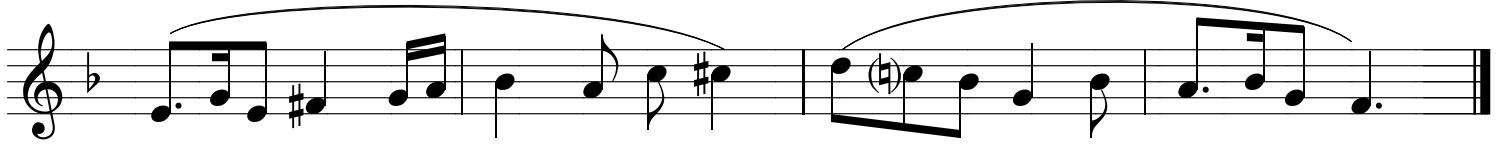
34



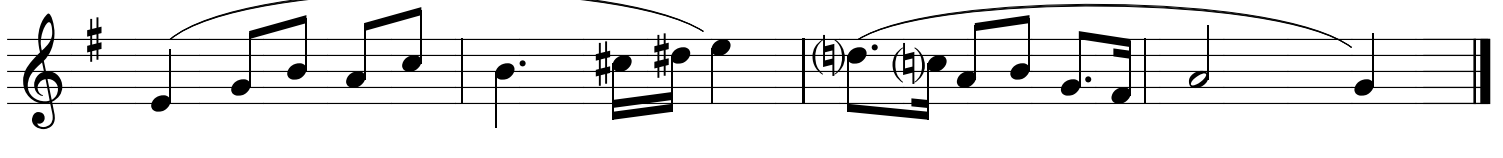
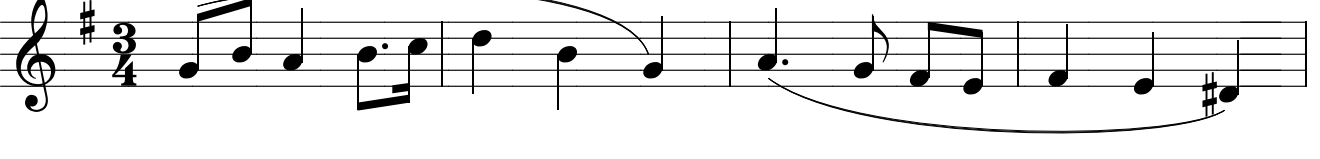
35



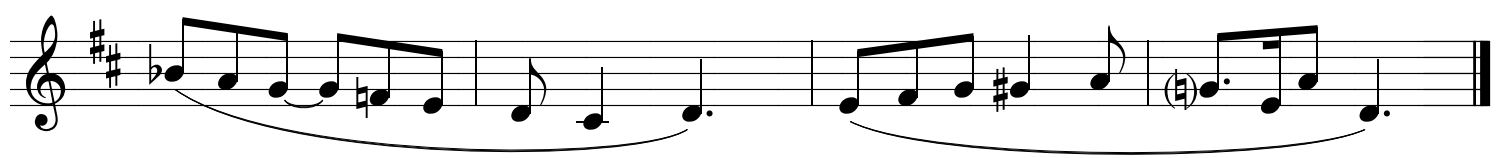
36



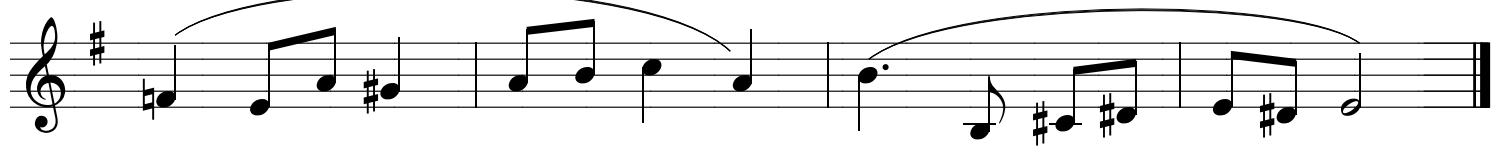
37



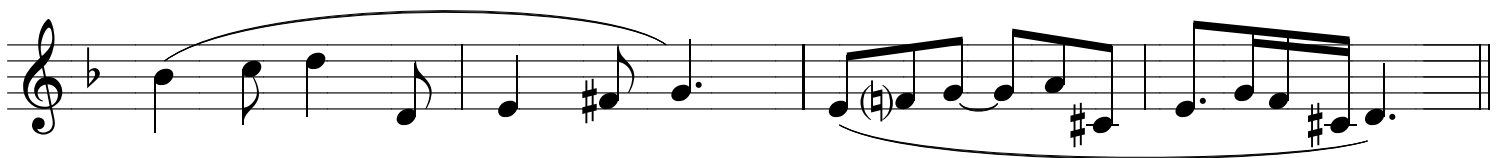
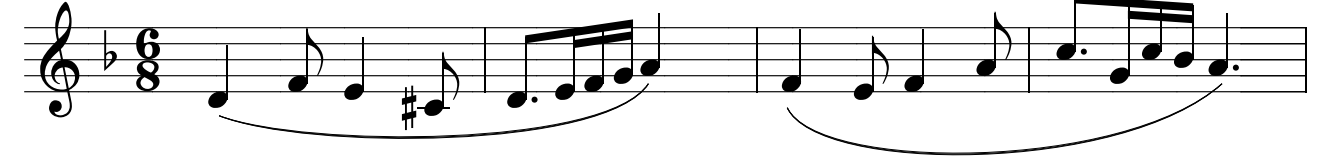
38



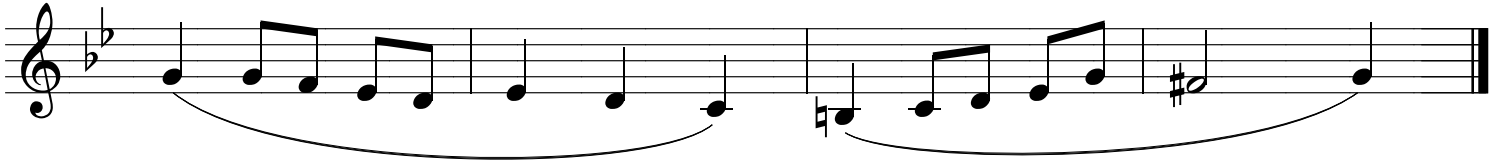
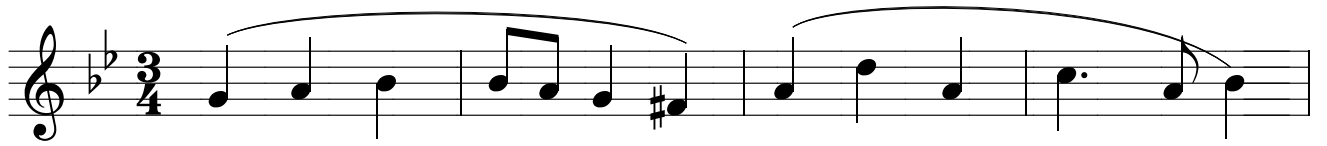
39



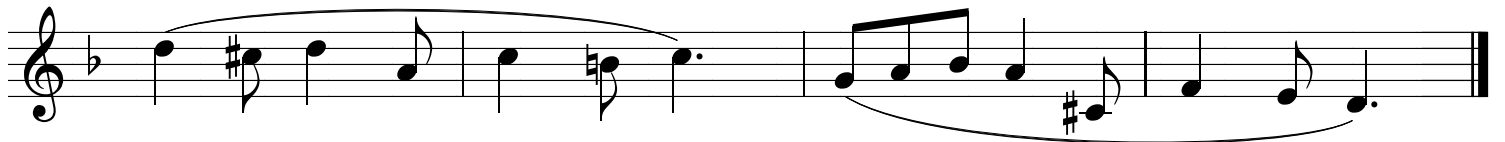
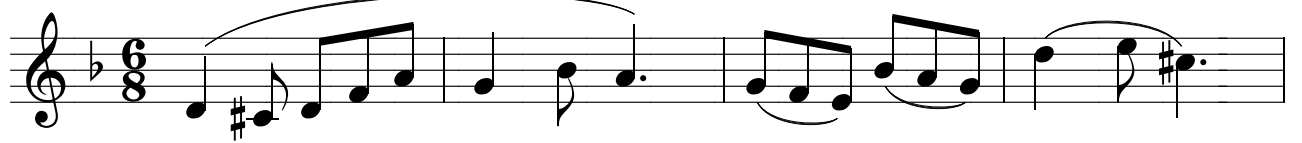
40



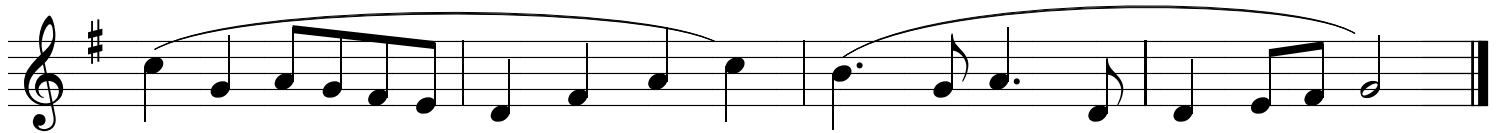
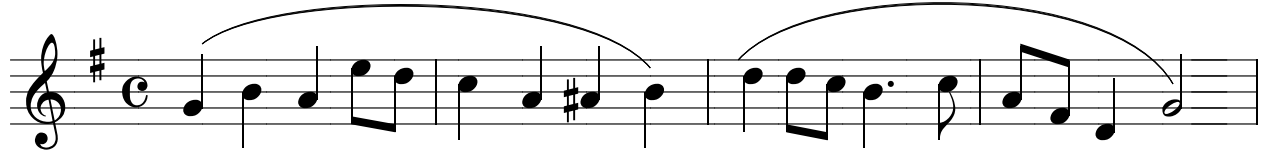
41



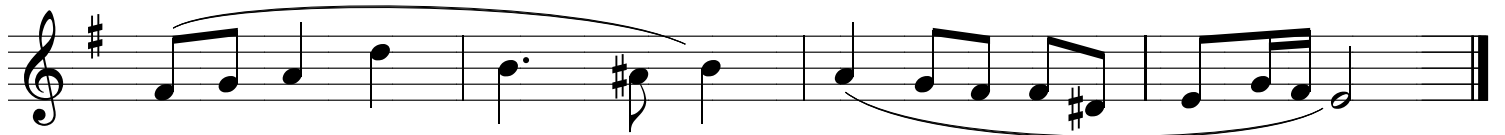
42



43



44



45

